

TAFI Antibody

Catalog No: #47972

Package Size: #47972-1 50ul #47972-2 100ul

Orders: order@signalwayantibody.comSupport: tech@signalwayantibody.com

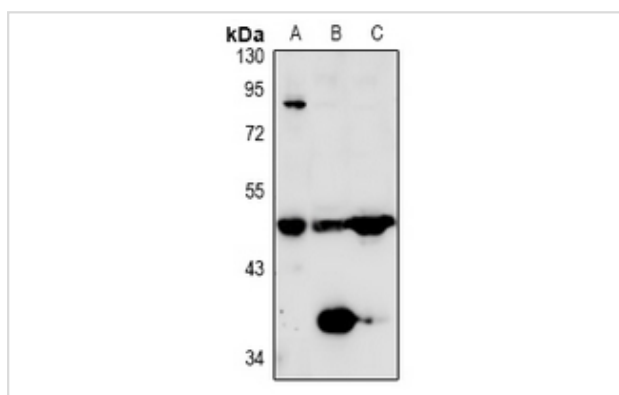
Description

Product Name	TAFI Antibody
Host Species	Rabbit
Clonality	Polyclonal
Purification	The antibody was purified by immunogen affinity chromatography.
Applications	WB, IHC
Species Reactivity	Hu,Ms,Rt
Specificity	Recognizes endogenous levels of TAFI protein.
Immunogen Description	KLH-conjugated synthetic peptide encompassing a sequence within the C-term region of human TAFI.
Target Name	CPB2
Other Names	Carboxypeptidase B2; Carboxypeptidase U; CPU; Plasma carboxypeptidase B; pCPB; Thrombin-activable fibrinolysis inhibitor; TAFI
Accession No.	Swiss-Prot#:Q96IY4NCBI Gene ID:1361
Calculated MW	48KD
Concentration	1 mg/ml
Formulation	Liquid in 0.42% Potassium phosphate, 0.87% Sodium chloride, pH 7.3, 30% glycerol, and 0.01% sodium azide.
Storage	Shipped at 4°C. Upon delivery aliquot and store at -20°C for one year. Avoid freeze/thaw cycles.

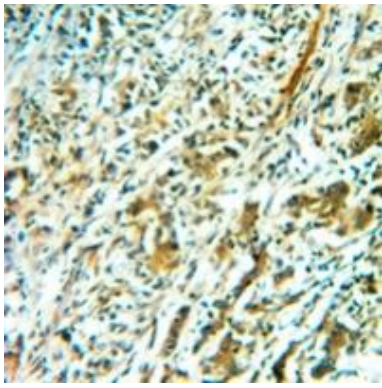
Application Details

Western blotting:1:500 - 1:1000

Images



Western blot analysis of TAFI expression in HepG2 (A), mouse liver (B), rat liver (C) whole cell lysates.



Immunohistochemical analysis of TAFI staining in human colorectal cancer formalin fixed paraffin embedded tissue section. The section was pre-treated using heat mediated antigen retrieval with sodium citrate buffer (pH 6.0). The section was then incubated with the antibody at room temperature and detected using an HRP conjugated compact polymer system. DAB was used as the chromogen. The section was then counterstained with haematoxylin and mounted with DPX.

Note: This product is for in vitro research use only and is not intended for use in humans or animals.