

COP1 Antibody

Catalog No: #47973

Package Size: #47973-1 50ul #47973-2 100ul

Orders: order@signalwayantibody.comSupport: tech@signalwayantibody.com

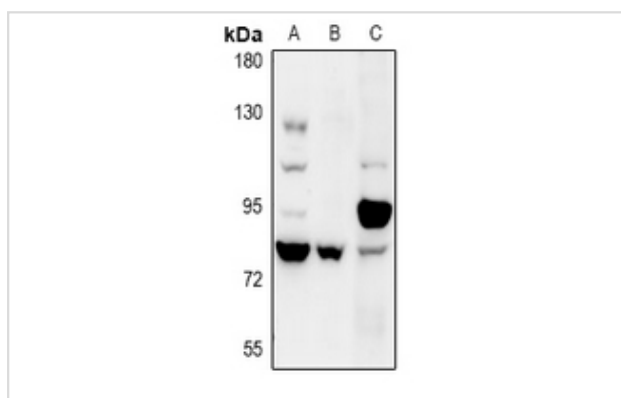
Description

Product Name	COP1 Antibody
Host Species	Rabbit
Clonality	Polyclonal
Purification	The antibody was purified by immunogen affinity chromatography.
Applications	WB
Species Reactivity	Hu,Ms,Rt
Specificity	Recognizes endogenous levels of COP1 protein.
Immunogen Description	KLH-conjugated synthetic peptide encompassing a sequence within the C-term region of human COP1.
Target Name	RFWD2
Other Names	COP1; RNF200; E3 ubiquitin-protein ligase RFWD2; Constitutive photomorphogenesis protein 1 homolog; hCOP1; RING finger and WD repeat domain protein 2; RING finger protein 200
Accession No.	Swiss-Prot#:Q8NHY2NCBI Gene ID:64326
Calculated MW	80KD
Concentration	1 mg/ml
Formulation	Liquid in 0.42% Potassium phosphate, 0.87% Sodium chloride, pH 7.3, 30% glycerol, and 0.01% sodium azide.
Storage	Shipped at 4°C. Upon delivery aliquot and store at -20°C for one year. Avoid freeze/thaw cycles.

Application Details

Western blotting: 1:500 - 1:1000

Images



Western blot analysis of COP1 expression in mouse testis (A), rat testis (B), HeLa (C) whole cell lysates.

Note: This product is for in vitro research use only and is not intended for use in humans or animals.