

Connexin 31.3 Antibody

Catalog No: #47974

Package Size: #47974-1 50ul #47974-2 100ul

Orders: order@signalwayantibody.com

Support: tech@signalwayantibody.com

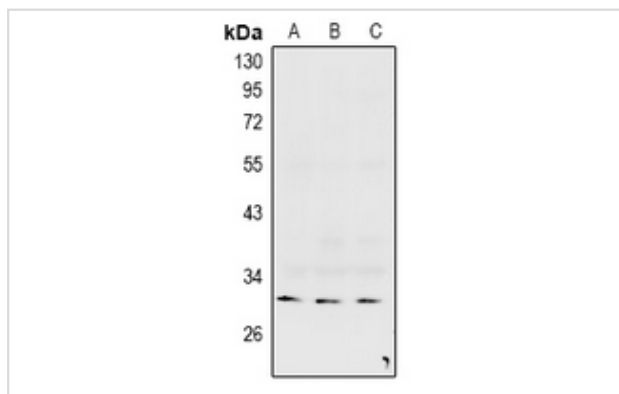
Description

Product Name	Connexin 31.3 Antibody
Host Species	Rabbit
Clonality	Polyclonal
Purification	The antibody was purified by immunogen affinity chromatography.
Applications	WB
Species Reactivity	Hu,Ms,Rt
Specificity	Recognizes endogenous levels of Connexin 31.3 protein.
Immunogen Description	KLH-conjugated synthetic peptide encompassing a sequence within the center region of human Connexin 31.3.
Target Name	GJC3
Other Names	GJE1; Gap junction gamma-3 protein; Connexin-30.2; Cx30.2; Connexin-31.3; Cx31.3; Gap junction epsilon-1 protein
Accession No.	Swiss-Prot#:Q8NFK1NCBI Gene ID:349149
Calculated MW	31KD
Concentration	1 mg/ml
Formulation	Liquid in 0.42% Potassium phosphate, 0.87% Sodium chloride, pH 7.3, 30% glycerol, and 0.01% sodium azide.
Storage	Shipped at 4°C. Upon delivery aliquot and store at -20°C for one year. Avoid freeze/thaw cycles.

Application Details

Western blotting:1:500 - 1:1000

Images



Western blot analysis of Connexin 31.3 expression in mouse brain (A), rat brain (B), HepG2 (C) whole cell lysates.

Note: This product is for in vitro research use only and is not intended for use in humans or animals.