

## ZIP1 Antibody

Catalog No: #47986

Package Size: #47986-1 50ul #47986-2 100ul

Orders: order@signalwayantibody.com

Support: tech@signalwayantibody.com

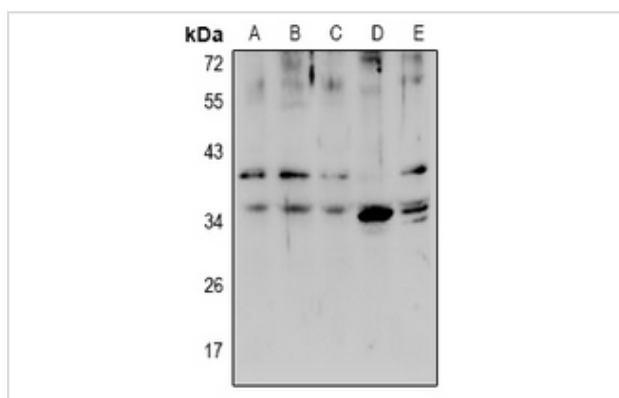
## Description

Product Name	ZIP1 Antibody
Host Species	Rabbit
Clonality	Polyclonal
Purification	The antibody was purified by immunogen affinity chromatography.
Applications	WB
Species Reactivity	Hu,Ms,Rt
Specificity	Recognizes endogenous levels of ZIP1 protein.
Immunogen Description	KLH-conjugated synthetic peptide encompassing a sequence within the center region of human ZIP1.
Target Name	SLC39A1
Other Names	IRT1; ZIP1; ZIRTL; Zinc transporter ZIP1; Solute carrier family 39 member 1; Zinc-iron-regulated transporter-like; Zrt- and Irt-like protein 1; ZIP-1; hZIP1
Accession No.	Swiss-Prot#:Q9NRY26NCBI Gene ID:27173
Calculated MW	40KD
Concentration	1 mg/ml
Formulation	Liquid in 0.42% Potassium phosphate, 0.87% Sodium chloride, pH 7.3, 30% glycerol, and 0.01% sodium azide.
Storage	Shipped at 4°C. Upon delivery aliquot and store at -20°C for one year. Avoid freeze/thaw cycles.

## Application Details

Western blotting:1:500 - 1:1000

## Images



Western blot analysis of ZIP1 expression in H1792 (A), LO2 (B), HCT116 (C), PC12 (D), AML12 (E) whole cell lysates

Note: This product is for in vitro research use only and is not intended for use in humans or animals.