

Prolyl Endopeptidase Antibody

Catalog No: #47987



Package Size: #47987-1 50ul #47987-2 100ul

Orders: order@signalwayantibody.comSupport: tech@signalwayantibody.com

Description

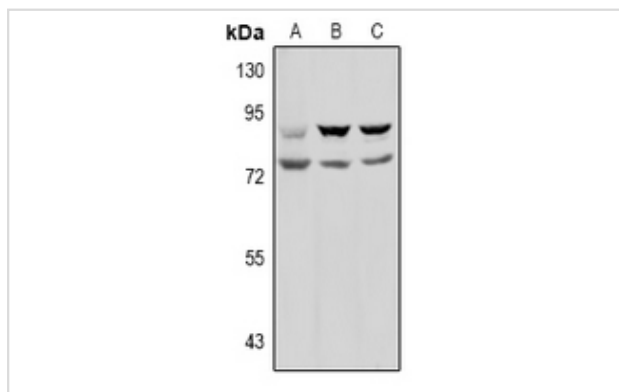
Product Name	Prolyl Endopeptidase Antibody
Host Species	Rabbit
Clonality	Polyclonal
Purification	The antibody was purified by immunogen affinity chromatography.
Applications	WB, IHC
Species Reactivity	Hu
Specificity	Recognizes endogenous levels of Prolyl Endopeptidase protein.
Immunogen Description	KLH-conjugated synthetic peptide encompassing a sequence within the N-term region of human Prolyl Endopeptidase.
Target Name	PREP
Other Names	Prolyl endopeptidase; PREP; PE; Post-proline cleaving enzyme; PEP
Accession No.	Swiss-Prot#:Q8N6D4NCBI Gene ID:5550
Calculated MW	80KD
Concentration	1 mg/ml
Formulation	Liquid in 0.42% Potassium phosphate, 0.87% Sodium chloride, pH 7.3, 30% glycerol, and 0.01% sodium azide.
Storage	Shipped at 4°C. Upon delivery aliquot and store at -20°C for one year. Avoid freeze/thaw cycles.

Application Details

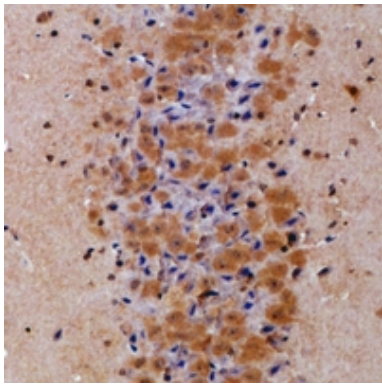
Western blotting:1:500 - 1:1000

Immunohistochemistry:1:50 - 1:100

Images



Western blot analysis of Prolyl Endopeptidase expression in HEK293T (A), U87MG (B), MCF7 (C) whole cell lysates.



Immunohistochemical analysis of Prolyl Endopeptidase staining in mouse brain formalin fixed paraffin embedded tissue section. The section was pre-treated using heat mediated antigen retrieval with sodium citrate buffer (pH 6.0). The section was then incubated with the antibody at room temperature and detected using an HRP conjugated compact polymer system. DAB was used as the chromogen. The section was then counterstained with haematoxylin and mounted with DPX.

Note: This product is for in vitro research use only and is not intended for use in humans or animals.