

## GPRC6A Antibody

Catalog No: #47990

Package Size: #47990-1 50ul #47990-2 100ul

Orders: [order@signalwayantibody.com](mailto:order@signalwayantibody.com)Support: [tech@signalwayantibody.com](mailto:tech@signalwayantibody.com)

## Description

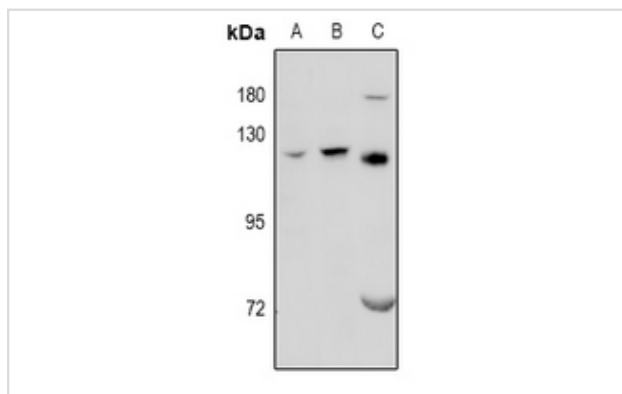
Product Name	GPRC6A Antibody
Host Species	Rabbit
Clonality	Polyclonal
Purification	The antibody was purified by immunogen affinity chromatography.
Applications	WB, IF/ICC
Species Reactivity	Hu,Ms,Rt
Specificity	Recognizes endogenous levels of GPRC6A protein.
Immunogen Description	KLH-conjugated synthetic peptide encompassing a sequence within the center region of human GPRC6A.
Target Name	GPRC6A
Other Names	G-protein coupled receptor family C group 6 member A; hGPRC6A; G-protein coupled receptor GPCR33; hGPCR33
Accession No.	Swiss-Prot#:Q5T6X5NCBI Gene ID:222545
Calculated MW	120KD
Concentration	1 mg/ml
Formulation	Liquid in 0.42% Potassium phosphate, 0.87% Sodium chloride, pH 7.3, 30% glycerol, and 0.01% sodium azide.
Storage	Shipped at 4°C. Upon delivery aliquot and store at -20°C for one year. Avoid freeze/thaw cycles.

## Application Details

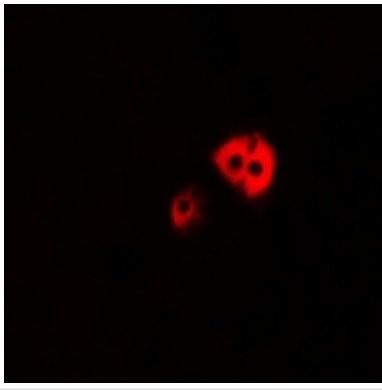
Western blotting:1:500 - 1:1000

Immunofluorescence:1:100 - 1:300

## Images



Western blot analysis of GPRC6A expression in HEK293T (A), LO2 (B), rat testis (C) whole cell lysates.



Immunofluorescent analysis of GPRC6A staining in MCF7 cells. Formalin-fixed cells were permeabilized with 0.1% Triton X-100 in TBS for 5-10 minutes and blocked with 3% BSA-PBS for 30 minutes at room temperature. Cells were probed with the primary antibody in 3% BSA-PBS and incubated overnight at 4 °C in a humidified chamber. Cells were washed with PBST and incubated with Alexa Fluor 647-conjugated secondary antibody (red) in PBS at room temperature in the dark.

---

Note: This product is for in vitro research use only and is not intended for use in humans or animals.