

GPR169 Antibody

Catalog No: #47991

Package Size: #47991-1 50ul #47991-2 100ul

Orders: order@signalwayantibody.comSupport: tech@signalwayantibody.com

Description

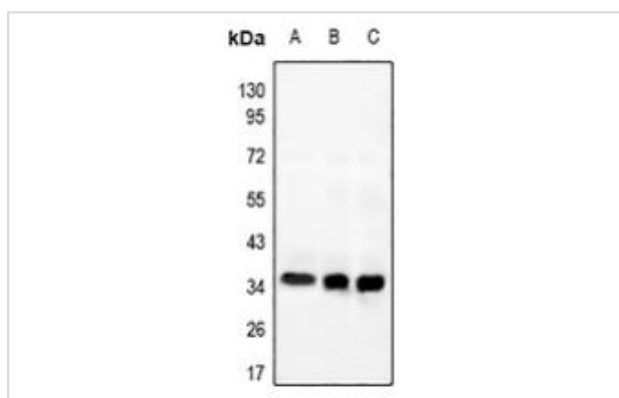
Product Name	GPR169 Antibody
Host Species	Rabbit
Clonality	Polyclonal
Purification	The antibody was purified by immunogen affinity chromatography.
Applications	WB, IHC, IF/ICC
Species Reactivity	Hu,Rt
Specificity	Recognizes endogenous levels of GPR169 protein.
Immunogen Description	KLH-conjugated synthetic peptide encompassing a sequence within the C-term region of human GPR169.
Target Name	MRGPRG
Other Names	GPR169; MRGG; Mas-related G-protein coupled receptor member G; G-protein coupled receptor 169
Accession No.	Swiss-Prot#:Q86SM5NCBI Gene ID:386746
Calculated MW	36KD
Concentration	1 mg/ml
Formulation	Liquid in 0.42% Potassium phosphate, 0.87% Sodium chloride, pH 7.3, 30% glycerol, and 0.01% sodium azide.
Storage	Shipped at 4°C. Upon delivery aliquot and store at -20°C for one year. Avoid freeze/thaw cycles.

Application Details

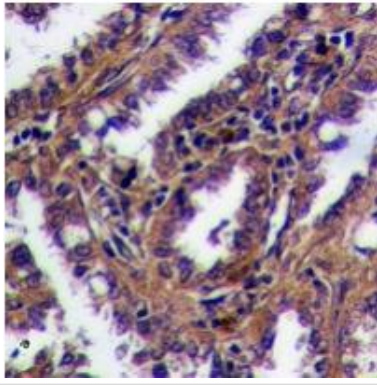
Western blotting:1:500 - 1:1000

Immunofluorescence:1:100 - 1:300

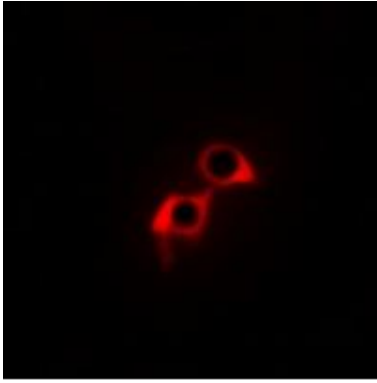
Images



Western blot analysis of GPR169 expression in PC12 (A), A549 (B), HeLa (C) whole cell lysates.



Immunohistochemical analysis of GPR169 staining in human lung cancer formalin fixed paraffin embedded tissue section. The section was pre-treated using heat mediated antigen retrieval with sodium citrate buffer (pH 6.0). The section was then incubated with the antibody at room temperature and detected using an HRP conjugated compact polymer system. DAB was used as the chromogen. The section was then counterstained with haematoxylin and mounted with DPX.



Immunofluorescent analysis of GPR169 staining in A549 cells. Formalin-fixed cells were permeabilized with 0.1% Triton X-100 in TBS for 5-10 minutes and blocked with 3% BSA-PBS for 30 minutes at room temperature. Cells were probed with the primary antibody in 3% BSA-PBS and incubated overnight at 4 °C in a humidified chamber. Cells were washed with PBST and incubated with Alexa Fluor 647-conjugated secondary antibody (red) in PBS at room temperature in the dark.

Note: This product is for in vitro research use only and is not intended for use in humans or animals.