

## PSAP Antibody

Catalog No: #P1021

Orders: [order@signalwayantibody.com](mailto:order@signalwayantibody.com)Support: [tech@signalwayantibody.com](mailto:tech@signalwayantibody.com)

## Description

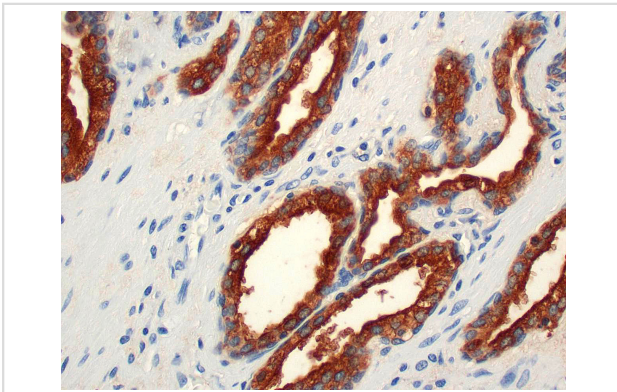
Product Name	PSAP Antibody
Host Species	Mouse
Clonality	Monoclonal
Clone No.	IHC655
Applications	IHC
Species Reactivity	Human
Formulation	Tris Buffer, pH 7.3 - 7.7, with 1% BSA and
Storage	Store at 2-8C. Do not freeze.

## Application Details

Recommended

working dilution range:1:100 - 1:200

## Images



PSAP Antibody (P1021) on Prostate

## Product Description

Prostatic Specific Acid Phosphatase (PSAP) is a prostatic enzyme found in the glandular epithelium of the prostate. PSAP levels are elevated in hyperplastic prostate and prostate carcinoma, with the highest levels being detected in metastasized prostate cancer. Moderate overexpression of PSAP is also characteristic of diseases of the bone (such as Pagets disease or hyperparathyroidism), diseases of blood cells (such as sickle-cell disease), multiple myeloma, or lysosomal storage diseases (such as Gauchers disease). PSAP is considered more sensitive, yet less specific, than PSA, however Anti-PSAP can act as a useful complement to Anti-PSA under suitable clinical contexts.

## References

- Ansari MA, et al. *Am J Clin Path.* 1981; 76:94-8.  
 Nadji M, et al. *Ann N Y Acad Sci.* 1982; 390:133-41.  
 Kimura N, et al. *Virchows Arch A Pathol Anat Histopathol.* 1986; 410:247-51.  
 Kidwai N, et al. *Breast Cancer Res.* 2004; 6:R18-23.  
 Kuroda N, et al. *Pathol Int.* 1999; 49:457-61.

Elgamal AA, et al. Urology. 1994; 44:84-90.  
Gatalica Z, et al. Appl Immunohistochem Mol Morphol. 2000; 8:158-61.  
Genega EM, et al. Mod Pathol. 2000; 13:1186-91.  
Green LK, et al. Hum Pathol. 1991; 22:242-6.  
Epstein JI. Urol Clin North Am. 1993; 20:757-70.  
van Krieken JH. Am J Surg Pathol. 1993; 17:410-4.

---

Note: This product is for in vitro research use only and is not intended for use in humans or animals.