

## MLH1 Antibody

Catalog No: #P1029

Orders: [order@signalwayantibody.com](mailto:order@signalwayantibody.com)Support: [tech@signalwayantibody.com](mailto:tech@signalwayantibody.com)

## Description

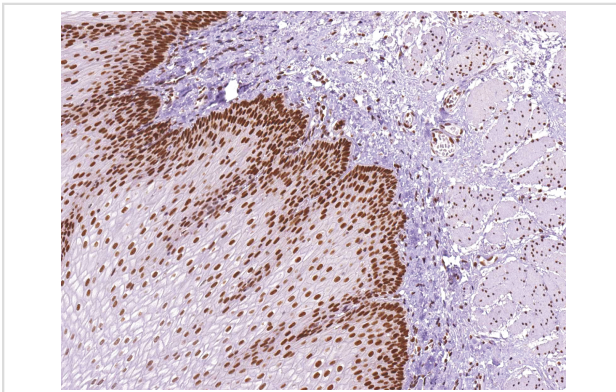
Product Name	MLH1 Antibody
Host Species	Mouse
Clonality	Monoclonal
Clone No.	IHC409
Applications	IHC
Species Reactivity	Human
Formulation	Tris Buffer, pH 7.3 - 7.7, with 1% BSA and
Storage	Store at 2-8C. Do not freeze.

## Application Details

Recommended

working dilution range:1:100 - 1:200

## Images



MLH1 (P1029) on Esophagus

## Product Description

MutL Homolog 1 (MLH1) is a protein involved in the mismatch-repair pathway. This protein is commonly associated with hereditary non-polyposis colorectal cancer, as the MLH1 gene is frequently mutated in patients with this cancer. Studies have shown MLH1 to be deficient in a high percentage of patients with microsatellite instability, as well as endometrial and ovarian cancers. Use of Anti-MLH1 is optimized when paired in an IHC panel with MSH6, MSH2, and PMS2. Anti-MLH1 is useful in the detection of MLH1 in a number of normal and neoplastic tissues, and for identifying a loss of MLH1 in tumors that are microsatellite-unstable.

## References

- Pal T, et al. *Cancer*. 2008; 113:733-42.
- Wright CL, et al. *Am J Surg Pathol*. 2003; 27:1393-1406.
- Brueckl WM, et al. *Anticancer Res*. 2003; 23:1773-8.
- Rigau V, et al. *Arch Pathol Lab Med*. 2003; 127:694-700.
- Renkonen E, et al. *J Clin Oncol*. 2003; 21:3629-37.

Hoedema R, et al. Am Surg. 2003; 69:387-92.  
Christensen M, et al. Cancer. 2002; 95:2422-30.  
Wahlberg SS, et al. Cancer Res. 2002; 62:3485-92.  
Lanza G, et al. Mod Pathol. 2002; 15:741-9.

---

Note: This product is for in vitro research use only and is not intended for use in humans or animals.