

DOG1 Antibody

Catalog No: #P1042

Orders: order@signalwayantibody.comSupport: tech@signalwayantibody.com

Description

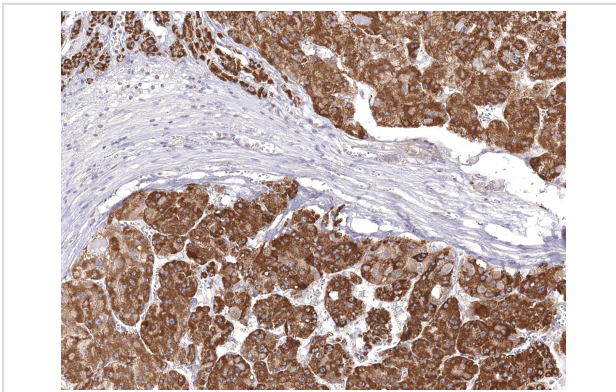
Product Name	DOG1 Antibody
Host Species	Mouse
Clonality	Monoclonal
Clone No.	IHC562
Applications	IHC
Species Reactivity	Human
Formulation	Tris Buffer, pH 7.3 - 7.7, with 1% BSA and
Storage	Store at 2-8C. Do not freeze.

Application Details

Recommended

working dilution range:1:100 - 1:200

Images



DOG1 [P1042] on Liver Cancer

Product Description

DOG1, also known as Discovered on GIST-1, is a marker that highly specific for gastrointestinal stromal tumor (GIST). Anti-DOG1 is extremely sensitive for the detection of GIST and its diagnosis. Although some GIST stain weakly for c-kit, DOG1 is expressed in the vast majority of GIST cases. Reports have also indicated DOG1 as a marker for salivary acinar and intercalated duct differentiation.

References

- Espinosa I, et al. *Am J Surg Pathol.* 2008; 32:210-8.
- Miwa S, et al. *J Gastroenterol.* 2008; 43:531-7.
- Parfitt JR, et al. *Histopathology.* 2008; 52:816-23.
- West RB, et al. *Am J Pathol.* 2004; 165:107-13.
- Lopes LF, et al. *Appl Immunohistochem Mol Morphol.* 2010; 18:333-7.
- Chnevert J, et al. *Mod Pathol.* 2012; 25:919-29.

Note: This product is for in vitro research use only and is not intended for use in humans or animals.