

# ZFHX4 Antibody

Catalog No: #44448



Package Size: #44448-1 50ul #44448-2 100ul

Orders: [order@signalwayantibody.com](mailto:order@signalwayantibody.com)

Support: [tech@signalwayantibody.com](mailto:tech@signalwayantibody.com)

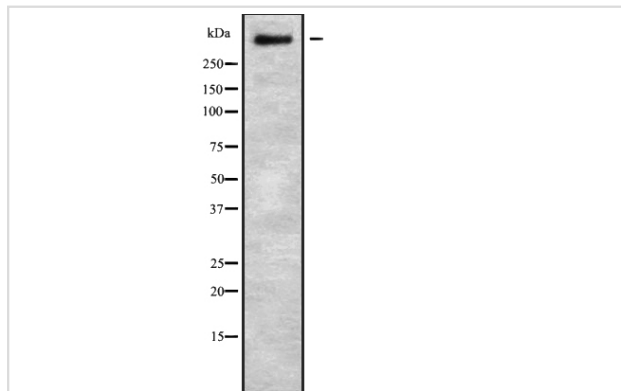
## Description

Product Name	ZFHX4 Antibody
Host Species	Rabbit
Clonality	Polyclonal
Purification	Rabbit IgG in phosphate buffered saline , pH 7.4, 150mM NaCl, 0.02% sodium azide and 50% glycerol.
Applications	WB
Species Reactivity	Hu Ms Rt
Specificity	ZFHX4 Antibody detects endogenous levels of total ZFHX4
Immunogen Type	Peptide
Immunogen Description	A synthesized peptide derived from human ZFHX4
Target Name	ZFHX4
Other Names	Zinc finger homeobox protein 4 Zinc finger homeodomain protein 4 ZFH-4
Accession No.	Swiss-Prot#: Q86UP3NCBI Gene ID:79776
Calculated MW	394 kDa
Concentration	1.0mg/mL
Formulation	Rabbit IgG in phosphate buffered saline , pH 7.4, 150mM NaCl, 0.02% sodium azide and 50% glycerol.
Storage	Store at -20°C

## Application Details

Western blotting: 1:1000-3000

## Images



Western blot analysis ZFHX4 using HUVEC whole cell lysates

---

Note: This product is for in vitro research use only and is not intended for use in humans or animals.