

ZNF462 Antibody

Catalog No: #44450



Package Size: #44450-1 50ul #44450-2 100ul

Orders: order@signalwayantibody.comSupport: tech@signalwayantibody.com

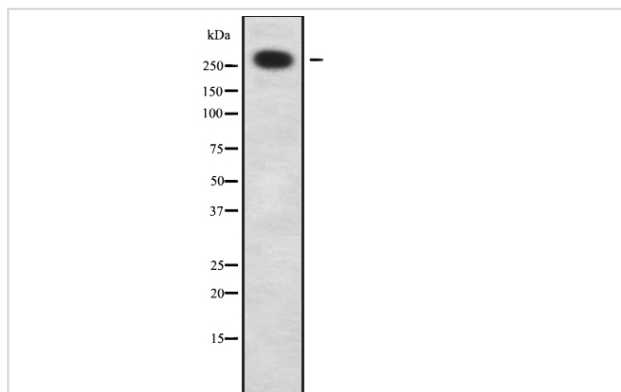
Description

Product Name	ZNF462 Antibody
Host Species	Rabbit
Clonality	Polyclonal
Purification	Rabbit IgG in phosphate buffered saline , pH 7.4, 150mM NaCl, 0.02% sodium azide and 50% glycerol.
Applications	WB
Species Reactivity	Hu Ms Rt
Specificity	ZNF462 Antibody detects endogenous levels of total ZNF462
Immunogen Type	Peptide
Immunogen Description	A synthesized peptide derived from human ZNF462
Target Name	ZNF462
Other Names	Zinc finger protein 462, KIAA1803
Accession No.	Swiss-Prot#: Q96JM2NCBI Gene ID:58499
Calculated MW	285 kDa
Concentration	1.0mg/mL
Formulation	Rabbit IgG in phosphate buffered saline , pH 7.4, 150mM NaCl, 0.02% sodium azide and 50% glycerol.
Storage	Store at -20°C

Application Details

Western blotting: 1:1000-3000

Images



Western blot analysis ZNF462 using HeLa whole cell lysates

Note: This product is for in vitro research use only and is not intended for use in humans or animals.