

ZNF600 Antibody

Catalog No: #44451

Package Size: #44451-1 50ul #44451-2 100ul

Orders: order@signalwayantibody.comSupport: tech@signalwayantibody.com

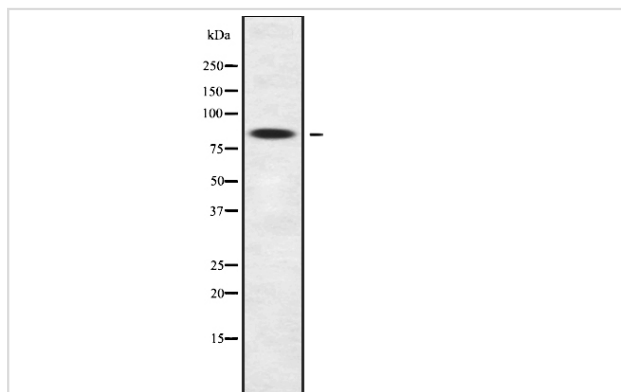
Description

Product Name	ZNF600 Antibody
Host Species	Rabbit
Clonality	Polyclonal
Purification	Rabbit IgG in phosphate buffered saline , pH 7.4, 150mM NaCl, 0.02% sodium azide and 50% glycerol.
Applications	WB
Species Reactivity	Hu
Specificity	ZNF600 Antibody detects endogenous levels of total ZNF600
Immunogen Type	Peptide
Immunogen Description	A synthesized peptide derived from human ZNF600
Target Name	ZNF600
Other Names	Zinc finger protein 600
Accession No.	Swiss-Prot#: Q6ZNG1NCBI Gene ID:162966
Calculated MW	83 kDa
Concentration	1.0mg/mL
Formulation	Rabbit IgG in phosphate buffered saline , pH 7.4, 150mM NaCl, 0.02% sodium azide and 50% glycerol.
Storage	Store at -20°C

Application Details

Western blotting: 1:1000-3000

Images



Western blot analysis ZNF600 using K562 whole cell lysates

Note: This product is for in vitro research use only and is not intended for use in humans or animals.