

## COX7A1 Antibody

Catalog No: #44512

Package Size: #44512-1 50ul #44512-2 100ul

Orders: [order@signalwayantibody.com](mailto:order@signalwayantibody.com)Support: [tech@signalwayantibody.com](mailto:tech@signalwayantibody.com)

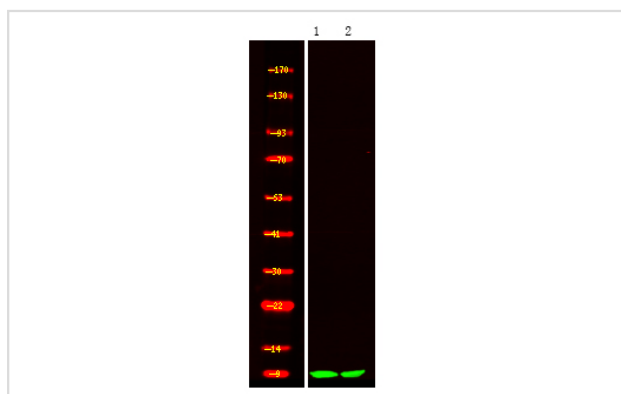
## Description

Product Name	COX7A1 Antibody
Host Species	Rabbit
Clonality	Polyclonal
Purification	Rabbit IgG in phosphate buffered saline , pH 7.4, 150mM NaCl, 0.02% sodium azide and 50% glycerol.
Applications	WB
Species Reactivity	Hu
Specificity	COX7A1 Antibody detects endogenous levels of total COX7A1
Immunogen Type	Peptide
Immunogen Description	A synthesized peptide derived from human COX7A1
Target Name	COX7A1
Other Names	COX7A1, COX7A, COX7AH, COX7AM
Accession No.	Swiss-Prot#: P24310NCBI Gene ID:1346
Calculated MW	9 kDa
Concentration	1.0mg/mL
Formulation	Rabbit IgG in phosphate buffered saline , pH 7.4, 150mM NaCl, 0.02% sodium azide and 50% glycerol.
Storage	Store at -20°C

## Application Details

Western blotting: 1:1000-3000

## Images



Western Blot analysis of lysates of 1. mouse heart and 2. rat heart, using primary antibody at 1:1000 dilution.

Note: This product is for in vitro research use only and is not intended for use in humans or animals.