

XCL1/2 Antibody

Catalog No: #44526



Package Size: #44526-1 50ul #44526-2 100ul

Orders: order@signalwayantibody.com

Support: tech@signalwayantibody.com

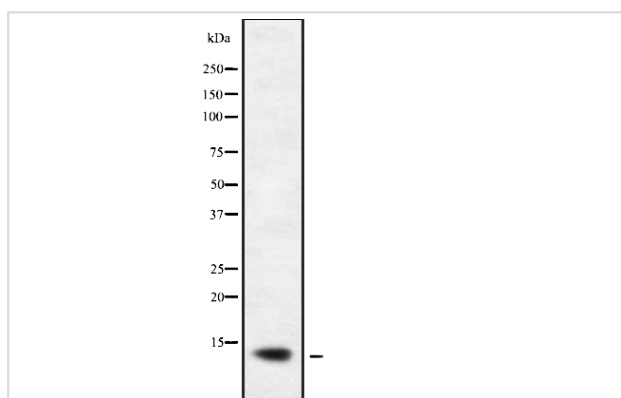
Description

Product Name	XCL1/2 Antibody
Host Species	Rabbit
Clonality	Polyclonal
Purification	Rabbit IgG in phosphate buffered saline , pH 7.4, 150mM NaCl, 0.02% sodium azide and 50% glycerol.
Applications	WB
Species Reactivity	Hu
Specificity	XCL1/2 Antibody detects endogenous levels of total XCL1/2
Immunogen Type	Peptide
Immunogen Description	A synthesized peptide derived from human XCL1/2
Target Name	XCL1/2
Other Names	SCYC2 LTN,SCYC1
Accession No.	Swiss-Prot#: Q9UBD3/P47992NCBI Gene ID:6846/6375
Calculated MW	13 kDa
Concentration	1.0mg/mL
Formulation	Rabbit IgG in phosphate buffered saline , pH 7.4, 150mM NaCl, 0.02% sodium azide and 50% glycerol.
Storage	Store at -20°C

Application Details

Western blotting: 1:1000-3000

Images



Western blot analysis XCL1/2 using K562 whole cell lysates

Note: This product is for in vitro research use only and is not intended for use in humans or animals.