

## interferon-alpha receptor 1 antibody

Catalog No: #23025

Orders: order@signalwayantibody.com

Support: tech@signalwayantibody.com

## Description

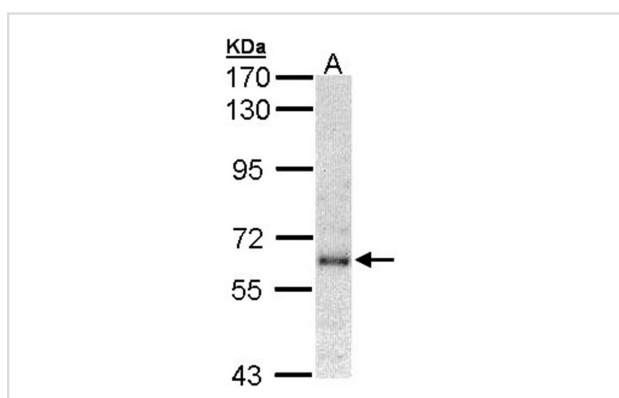
Product Name	interferon-alpha receptor 1 antibody
Host Species	Rabbit
Clonality	Polyclonal
Purification	Purified by antigen-affinity chromatography.
Applications	WB
Species Reactivity	Hu
Immunogen Type	Recombinant protein
Immunogen Description	Recombinant protein fragment contain a sequence corresponding to a region within amino acids 3 and 210 of Human IFNAR1
Target Name	interferon-alpha receptor 1
Accession No.	NCBI Gene ID: 3454NCBI mRNA#: NM_000629NCBI Protein#: NP_000620
Concentration	0.5mg/ml
Formulation	Supplied in 0.1M Tris-buffered saline with 10% Glycerol (pH7.0). 0.01% Thimerosal was added as a preservative.
Storage	Store at -20°C for long term preservation (recommended). Store at 4°C for short term use.

## Application Details

Predicted MW: 64kd

Western blotting: 1:500-1:3000

## Images



Sample (30 ug of whole cell lysate)

A: A431

7.5% SDS PAGE

Primary antibody diluted at 1: 1000

## Background

The protein encoded by this gene is a type I membrane protein that forms one of the two chains of a receptor for interferons alpha and beta. Binding and activation of the receptor stimulates Janus protein kinases, which in turn phosphorylate several proteins, including STAT1 and STAT2. The encoded protein also functions as an antiviral factor. [provided by RefSeq]

---

Note: This product is for in vitro research use only and is not intended for use in humans or animals.