

LRRC42 Antibody

Catalog No: #44668



Package Size: #44668-1 50ul #44668-2 100ul

Orders: order@signalwayantibody.comSupport: tech@signalwayantibody.com

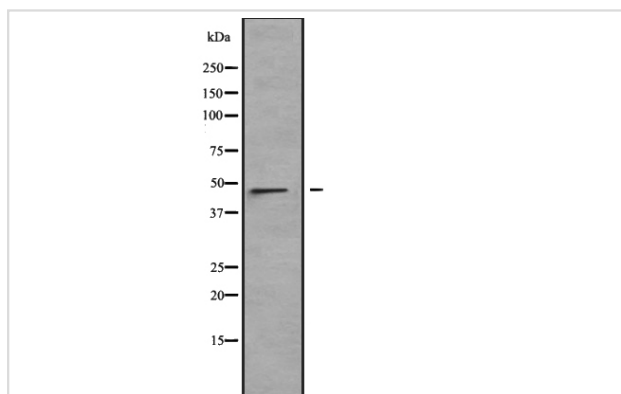
Description

Product Name	LRRC42 Antibody
Host Species	Rabbit
Clonality	Polyclonal
Purification	Rabbit IgG in phosphate buffered saline , pH 7.4, 150mM NaCl, 0.02% sodium azide and 50% glycerol.
Applications	WB
Species Reactivity	Hu Ms Rt
Specificity	LRRC42antibody detects endogenous levels of total?LRRC42
Immunogen Type	Peptide
Immunogen Description	A synthesized peptide derived from human LRRC42
Target Name	LRRC42
Other Names	DJ167A19.4 antibody Leucine rich repeat containing 42 antibody MGC8974 antibody OTTHUMP00000010107 antibody OTTHUMP00000010108 antibody
Accession No.	Swiss-Prot#: Q9Y546NCBI Gene ID:115353
Calculated MW	49 kDa
Concentration	1.0mg/mL
Formulation	Rabbit IgG in phosphate buffered saline , pH 7.4, 150mM NaCl, 0.02% sodium azide and 50% glycerol.
Storage	Store at -20°C

Application Details

Western blotting: □ 1:500-1:2000

Images



Western blot analysis of LRRC42 expression in HT1080 cell lysate. The lane on the left is treated with the antigen-specific peptide.

Note: This product is for in vitro research use only and is not intended for use in humans or animals.