

LPPL Antibody

Catalog No: #44728

Package Size: #44728-1 50ul #44728-2 100ul

Orders: order@signalwayantibody.comSupport: tech@signalwayantibody.com

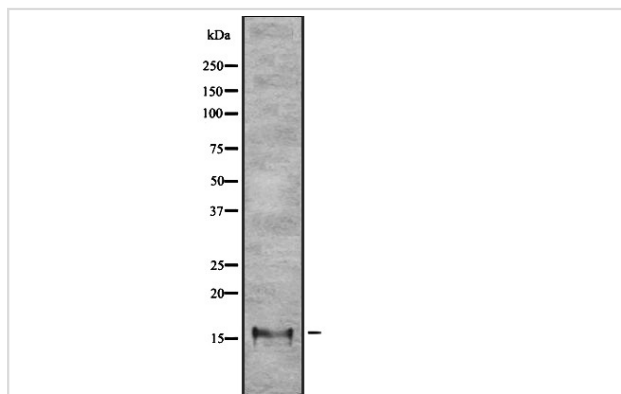
Description

| | |
|-----------------------|--|
| Product Name | LPPL Antibody |
| Host Species | Rabbit |
| Clonality | Polyclonal |
| Purification | Rabbit IgG in phosphate buffered saline , pH 7.4, 150mM NaCl, 0.02% sodium azide and 50% glycerol. |
| Applications | WB |
| Species Reactivity | Hu Ms |
| Specificity | LPPL antibody detects endogenous levels of total LPPL |
| Immunogen Type | Peptide |
| Immunogen Description | A synthesized peptide derived from human LPPL |
| Target Name | LPPL |
| Other Names | CLC |
| Accession No. | Swiss-Prot#: Q05315NCBI Gene ID:1178 |
| Calculated MW | 16 kDa |
| Concentration | 1.0mg/mL |
| Formulation | Rabbit IgG in phosphate buffered saline , pH 7.4, 150mM NaCl, 0.02% sodium azide and 50% glycerol. |
| Storage | Store at -20°C |

Application Details

Western blotting: □ 1:500-1:2000

Images



Western blot analysis of LPPL expression in HEK293 cells
 ,The lane on the left is treated with the antigen-specific peptide.

Note: This product is for in vitro research use only and is not intended for use in humans or animals.