

ZFPM1 Antibody

Catalog No: #44752



Package Size: #44752-1 50ul #44752-2 100ul

Orders: order@signalwayantibody.comSupport: tech@signalwayantibody.com

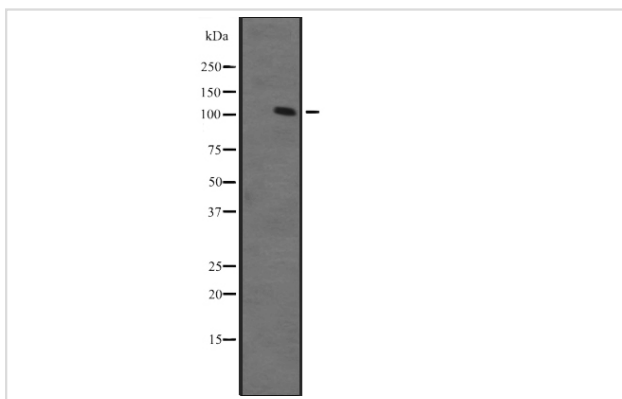
Description

Product Name	ZFPM1 Antibody
Host Species	Rabbit
Clonality	Polyclonal
Purification	Rabbit IgG in phosphate buffered saline , pH 7.4, 150mM NaCl, 0.02% sodium azide and 50% glycerol.
Applications	WB
Species Reactivity	Hu Ms
Specificity	ZFPM1 antibody detects endogenous levels of total ZFPM1
Immunogen Type	Peptide
Immunogen Description	A synthesized peptide derived from human ZFPM1
Target Name	ZFPM1
Other Names	FOG-1 antibody FOG1_HUMAN antibody Friend of GATA 1 antibody Friend of GATA protein 1 antibody Friend of GATA1 antibody ZFPM1 antibody Zinc finger protein antibody Zinc finger protein 89A antibody Zinc finger protein multitype 1 antibody Zinc finger protein ZFPM1 antibody
Accession No.	Swiss-Prot#: Q8IX07 NCBI Gene ID:161882
Calculated MW	104 kDa
Concentration	1.0mg/mL
Formulation	Rabbit IgG in phosphate buffered saline , pH 7.4, 150mM NaCl, 0.02% sodium azide and 50% glycerol.
Storage	Store at -20°C

Application Details

Western blotting: □ 1:500-1:2000

Images



Western blot analysis of ZFPM1 expression in Ant fetal muscle lysate
The lane on the left is treated with the antigen-specific peptide.

Note: This product is for in vitro research use only and is not intended for use in humans or animals.