

L36mt Antibody

Catalog No: #44789



Package Size: #44789-1 50ul #44789-2 100ul

Orders: order@signalwayantibody.comSupport: tech@signalwayantibody.com

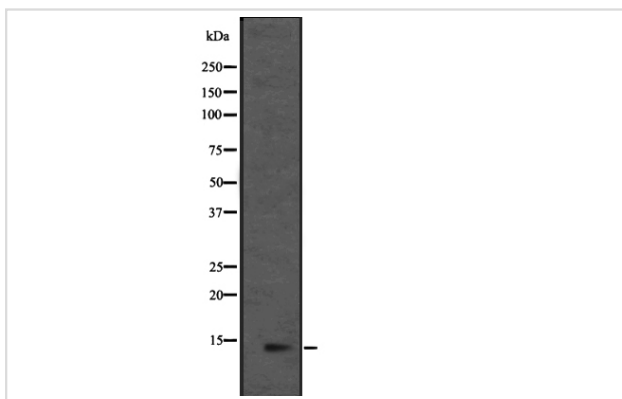
Description

Product Name	L36mt Antibody
Host Species	Rabbit
Clonality	Polyclonal
Purification	Rabbit IgG in phosphate buffered saline , pH 7.4, 150mM NaCl, 0.02% sodium azide and 50% glycerol.
Applications	WB
Species Reactivity	Hu Ms
Specificity	L36mtantibody detects endogenous levels of total?L36mt
Immunogen Type	Peptide
Immunogen Description	A synthesized peptide derived from human L36mt
Target Name	L36mt
Other Names	39S ribosomal protein L36 antibody 39S ribosomal protein L36 mitochondrial antibody BRCA1-interacting protein 1 antibody BRIP1 antibody L36mt antibody Mitochondrial ribosomal protein L36 antibody MRP L36 antibody MRP-L36 antibody Mrpl36 antibody PRPL36 antibody Putative BRCA1 interacting protein ant
Accession No.	Swiss-Prot#: Q9P0J6NCBI Gene ID:64979
Calculated MW	12 kDa.
Concentration	1.0mg/mL
Formulation	Rabbit IgG in phosphate buffered saline , pH 7.4, 150mM NaCl, 0.02% sodium azide and 50% glycerol.
Storage	Store at -20°C

Application Details

Western blotting: □ 1:500-1:2000

Images



Western blot analysis of L36mt expression in HEK293 cells
,The lane on the left is treated with the antigen-specific
peptide.

Note: This product is for in vitro research use only and is not intended for use in humans or animals.