

## MYO1B antibody

Catalog No: #23043

Orders: [order@signalwayantibody.com](mailto:order@signalwayantibody.com)Support: [tech@signalwayantibody.com](mailto:tech@signalwayantibody.com)

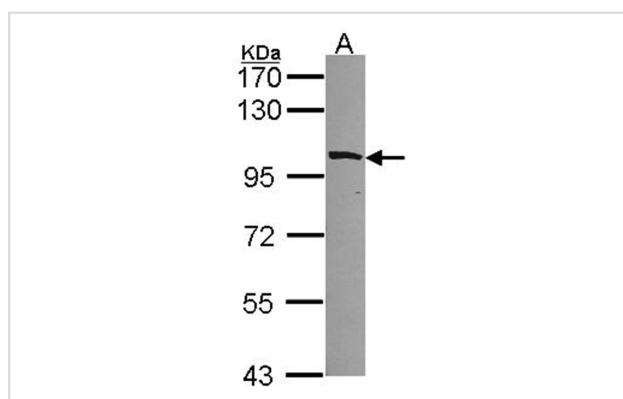
## Description

Product Name	MYO1B antibody
Host Species	Rabbit
Clonality	Polyclonal
Purification	Purified by antigen-affinity chromatography.
Applications	WB
Species Reactivity	Human;Rat;Mouse
Immunogen Type	Recombinant Protein
Immunogen Description	Recombinant protein fragment contain a sequence corresponding to a region within amino acids 916 and 1125 of MYO1B
Target Name	MYO1B
Accession No.	NCBI Gene ID: 4430NCBI mRNA#: BC053558NCBI Protein#: AAH53558
Concentration	0.9mg/ml
Formulation	Supplied in 1XPBS, 1%BSA, 20% Glycerol (pH7.0). 0.01% Thimerosal was added as a preservative.
Storage	Store at -20°C for long term preservation (recommended). Store at 4°C for short term use.

## Application Details

Predicted MW: 132kd

## Images



Sample (30 ug of whole cell lysate)

A: 293T

7.5% SDS PAGE

Primary antibody diluted at 1: 1000

Note: This product is for in vitro research use only and is not intended for use in humans or animals.