

JAM2 Antibody

Catalog No: #44830



Package Size: #44830-1 50ul #44830-2 100ul

Orders: order@signalwayantibody.comSupport: tech@signalwayantibody.com

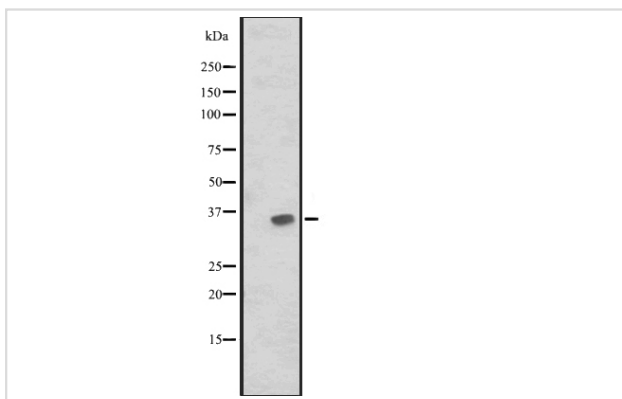
Description

Product Name	JAM2 Antibody
Host Species	Rabbit
Clonality	Polyclonal
Purification	Rabbit IgG in phosphate buffered saline , pH 7.4, 150mM NaCl, 0.02% sodium azide and 50% glycerol.
Applications	WB
Species Reactivity	Hu Ms Rt
Specificity	JAM2antibody detects endogenous levels of total?JAM2
Immunogen Type	Peptide
Immunogen Description	A synthesized peptide derived from human JAM2
Target Name	JAM2
Other Names	C21orf43 antibody CD 322 antibody CD322 antibody CD322 antigen antibody JAM 2 antibody JAM B antibody JAM IT/VE JAM antibody JAM, vascular endothelial antibody JAM-2 antibody JAM-B antibody JAM2 antibody JAM2_HUMAN antibody JAMB antibody Jcam2 antibody Junction adhesion molecule 2 antibody Junction
Accession No.	Swiss-Prot#: P57087NCBI Gene ID:58494
Calculated MW	33 kDa
Concentration	1.0mg/mL
Formulation	Rabbit IgG in phosphate buffered saline , pH 7.4, 150mM NaCl, 0.02% sodium azide and 50% glycerol.
Storage	Store at -20°C

Application Details

Western blotting: □ 1:500-1:2000

Images



Western blot analysis of JAM2 expression in HUVEC cell lysate. The lane on the left is treated with the antigen-specific peptide.

Note: This product is for in vitro research use only and is not intended for use in humans or animals.