

ZDHHC13 Antibody

Catalog No: #44863



Package Size: #44863-1 50ul #44863-2 100ul

Orders: order@signalwayantibody.comSupport: tech@signalwayantibody.com

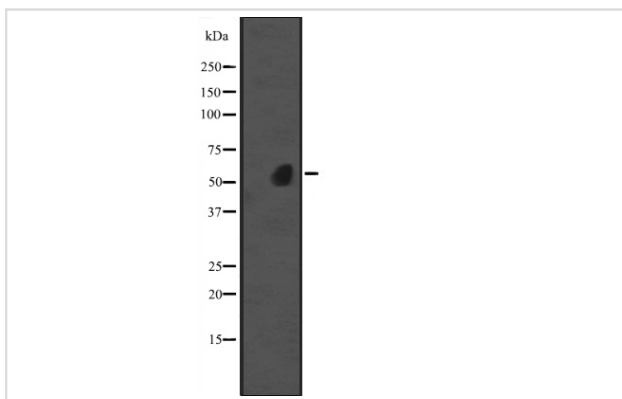
Description

Product Name	ZDHHC13 Antibody
Host Species	Rabbit
Clonality	Polyclonal
Purification	Rabbit IgG in phosphate buffered saline , pH 7.4, 150mM NaCl, 0.02% sodium azide and 50% glycerol.
Applications	WB
Species Reactivity	Hu
Specificity	ZDHHC13antibody detects endogenous levels of total?ZDHHC13
Immunogen Type	Peptide
Immunogen Description	A synthesized peptide derived from human ZDHHC13
Target Name	ZDHHC13
Other Names	DHHC 13 antibody DHHC-13 antibody FLJ10852 antibody FLJ10941 antibody HIP14 like antibody HIP14 related protein antibody HIP14-related protein antibody HIP14L antibody HIP3RP antibody Huntingtin interacting protein 14 related protein antibody Huntingtin interacting protein HIP3RP antibody Huntingtin
Accession No.	Swiss-Prot#: Q8IUH4NCBI Gene ID:54503
Calculated MW	58 kDa
Concentration	1.0mg/mL
Formulation	Rabbit IgG in phosphate buffered saline , pH 7.4, 150mM NaCl, 0.02% sodium azide and 50% glycerol.
Storage	Store at -20°C

Application Details

Western blotting: □ 1:500-1:2000

Images



Western blot analysis of ZDHHC13 expression in Jurkat cell lysate
The lane on the left is treated with the antigen-specific peptide.

Note: This product is for in vitro research use only and is not intended for use in humans or animals.