

PKC antibody

Catalog No: #23055

Orders: order@signalwayantibody.com

Support: tech@signalwayantibody.com

Description

Product Name	PKC antibody
Host Species	Rabbit
Clonality	Polyclonal
Purification	Purified by antigen-affinity chromatography.
Applications	WB IHC
Species Reactivity	Hu
Immunogen Type	Recombinant protein
Immunogen Description	Recombinant protein fragment contain a sequence corresponding to a region within amino acids 1 and 220 of Human PRKCA
Target Name	PKC
Accession No.	NCBI Gene ID: 5578NCBI mRNA#: NM_002737NCBI Protein#: NP_002728
Concentration	0.7mg/ml
Formulation	Supplied in 0.1M Tris-buffered saline with 10% Glycerol (pH7.0). 0.01% Thimerosal was added as a preservative.
Storage	Store at -20°C for long term preservation (recommended). Store at 4°C for short term use.

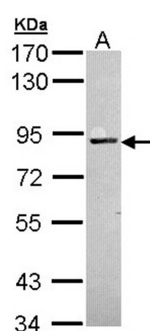
Application Details

Predicted MW: 77kd

Western blotting: 1:500-1:3000

Immunohistochemistry: 1:50-1:500

Images

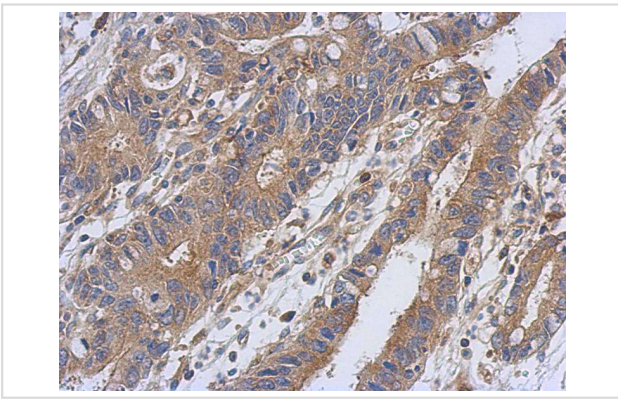


Sample (30 ug of whole cell lysate)

A: H1299

7.5% SDS PAGE

Primary antibody diluted at 1: 1000



Immunohistochemical analysis of paraffin-embedded Colon ca, using PKC alpha antibody at 1: 500 dilution.

Background

Protein kinase C (PKC) is a family of serine- and threonine-specific protein kinases that can be activated by calcium and the second messenger diacylglycerol. PKC family members phosphorylate a wide variety of protein targets and are known to be involved in diverse cellular signaling pathways. PKC family members also serve as major receptors for phorbol esters, a class of tumor promoters. Each member of the PKC family has a specific expression profile and is believed to play a distinct role in cells. The protein encoded by this gene is one of the PKC family members. This kinase has been reported to play roles in many different cellular processes, such as cell adhesion, cell transformation, cell cycle checkpoint, and cell volume control. Knockout studies in mice suggest that this kinase may be a fundamental regulator of cardiac contractility and Ca²⁺ handling in myocytes. [provided by RefSeq]

Note: This product is for in vitro research use only and is not intended for use in humans or animals.