

Protein C antibody

Catalog No: #23056

Orders: order@signalwayantibody.com

Support: tech@signalwayantibody.com

Description

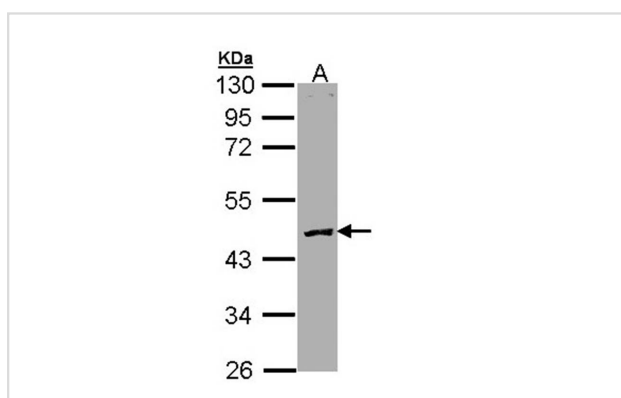
| | |
|-----------------------|--|
| Product Name | Protein C antibody |
| Host Species | Rabbit |
| Clonality | Polyclonal |
| Purification | Purified by antigen-affinity chromatography. |
| Applications | WB |
| Species Reactivity | Hu |
| Immunogen Type | Recombinant protein |
| Immunogen Description | Recombinant protein fragment contain a sequence corresponding to a region within amino acids 145 and 453 of Human PROC |
| Target Name | Protein C |
| Accession No. | NCBI Gene ID: 5624NCBI mRNA#: NM_000312NCBI Protein#: NP_000303 |
| Concentration | 1mg/ml |
| Formulation | Supplied in 0.1M Tris-buffered saline with 10% Glycerol (pH7.0). 0.01% Thimerosal was added as a preservative. |
| Storage | Store at -20°C for long term preservation (recommended). Store at 4°C for short term use. |

Application Details

Predicted MW: 52kd

Western blotting: 1:500-1:3000

Images



Sample (30 ug of whole cell lysate)

A: Molt-4

10% SDS PAGE

Primary antibody diluted at 1: 3000

Background

The PROC gene encodes protein C (EC 3.4.21.69), a vitamin K-dependent plasma glycoprotein that is a key component of the anticoagulant system. Protein C is cleaved to its activated form, 'activated protein C' (APC) on endothelial cells by the thrombin-thrombomodulin complex (MIM 176930; MIM 188040) and then acts as a serine protease to degrade the activated forms of coagulation factors V (F5; MIM 612309) and VIII (F8; see MIM 306700). Protein S (PROS1; MIM 176880), also a vitamin K-dependent plasma protein, functions as a cofactor to activated protein C.[supplied by OMIM]

Note: This product is for in vitro research use only and is not intended for use in humans or animals.