

GPR44 Antibody

Catalog No: #44969



Package Size: #44969-1 50ul #44969-2 100ul

Orders: order@signalwayantibody.comSupport: tech@signalwayantibody.com

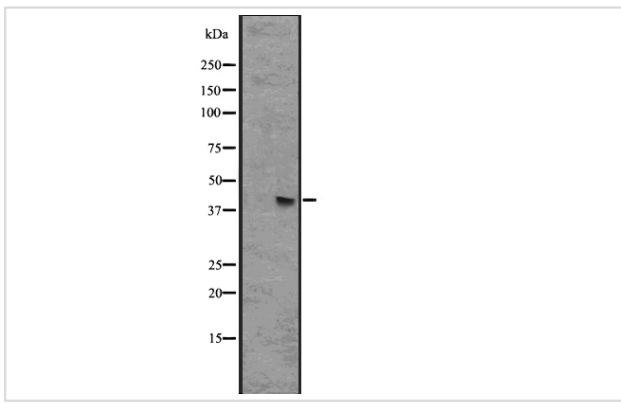
Description

Product Name	GPR44 Antibody
Host Species	Rabbit
Clonality	Polyclonal
Purification	Rabbit IgG in phosphate buffered saline , pH 7.4, 150mM NaCl, 0.02% sodium azide and 50% glycerol.
Applications	WB
Species Reactivity	Hu Ms
Specificity	GPR44antibody detects endogenous levels of total?GPR44
Immunogen Type	Peptide
Immunogen Description	A synthesized peptide derived from human GPR44
Target Name	GPR44
Other Names	CD294 antibody CD294 antigen antibody Chemoattractant receptor homologous molecule expressed on Th2 cells antibody chemoattractant receptor-homologous antibody Chemoattractant receptor-homologous molecule expressed on Th2 cells antibody CRTH 2 antibody CRTH2 antibody
Accession No.	Swiss-Prot#: Q9Y5Y4NCBI Gene ID:11251
Calculated MW	43 kDa
Concentration	1.0mg/mL
Formulation	Rabbit IgG in phosphate buffered saline , pH 7.4, 150mM NaCl, 0.02% sodium azide and 50% glycerol.
Storage	Store at -20°C

Application Details

Western blotting: □ 1:500-1:2000

Images



Western blot analysis of GPR44 expression in HEK293 cells
,The lane on the left is treated with the antigen-specific
peptide.

Note: This product is for in vitro research use only and is not intended for use in humans or animals.