

## XPNPEP2 antibody

Catalog No: #23078



Orders: order@signalwayantibody.com

Support: tech@signalwayantibody.com

## Description

Product Name	XPNPEP2 antibody
Host Species	Rabbit
Clonality	Polyclonal
Purification	Purified by antigen-affinity chromatography.
Applications	WB IHC
Species Reactivity	Hu
Immunogen Type	Recombinant protein
Immunogen Description	Recombinant protein fragment contain a sequence corresponding to a region within amino acids 198 and 446 of XPNPEP2
Target Name	XPNPEP2
Accession No.	NCBI Gene ID: 7512NCBI mRNA#: NM_003399NCBI Protein#: NP_003390
Concentration	0.8mg/ml
Formulation	Supplied in 0.1M Tris-buffered saline with 10% Glycerol (pH7.0). 0.01% Thimerosal was added as a preservative.
Storage	Store at -20°C for long term preservation (recommended). Store at 4°C for short term use.

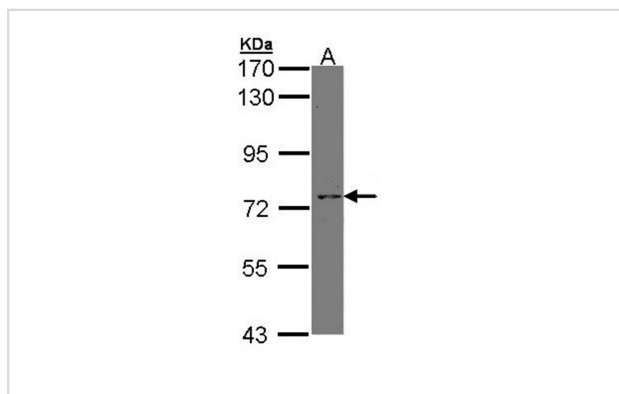
## Application Details

Predicted MW: 76kd

Western blotting: 1:500-1:3000

Immunohistochemistry: 1:100-1:500

## Images

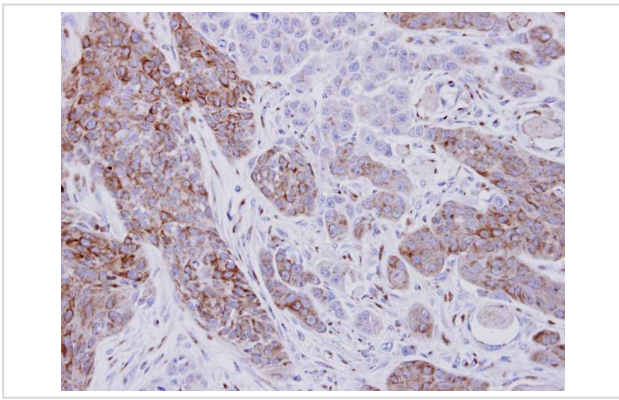


Sample (30 ug of whole cell lysate)

A: A431

7.5% SDS PAGE

Primary antibody diluted at 1: 1000



Immunohistochemical analysis of paraffin-embedded Ca922 xenograft, using XPNEP2 antibody at 1: 500 dilution.

## Background

Amino peptidase P is a hydrolase specific for N-terminal imido bonds, which are common to several collagen degradation products, neuropeptides, vasoactive peptides, and cytokines. Structurally, the enzyme is a member of the 'pita bread fold' family and occurs in mammalian tissues in both soluble and GPI-anchored membrane-bound forms. A membrane-bound and soluble form of this enzyme have been identified as products of two separate genes. [provided by RefSeq]

Note: This product is for in vitro research use only and is not intended for use in humans or animals.