

LTBP-4 antibody

Catalog No: #23084

Orders: order@signalwayantibody.comSupport: tech@signalwayantibody.com

Description

Product Name	LTBP-4 antibody
Host Species	Rabbit
Clonality	Polyclonal
Purification	Antigen affinity purification
Applications	WB IF
Species Reactivity	Hu
Immunogen Type	Recombinant Protein
Immunogen Description	Synthetic peptide of human LTBP4
Target Name	LTBP-4
Accession No.	NCBI Gene ID: 8425NCBI mRNA#: NM_003573NCBI Protein#: NP_003564
Concentration	0.6 mg/ml
Formulation	pH7.4 PBS, 0.05% NaN ₃ , 40% Glycerol
Storage	Store at -20°C for long term preservation (recommended). Store at 4°C for short term use.

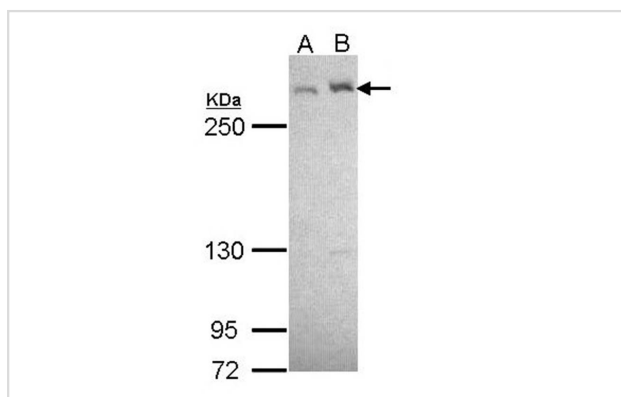
Application Details

Predicted MW: 169kd

Western blotting: 1:500-1:3000

Immunofluorescence: 1:100-1:200

Images



Sample (30 ug of whole cell lysate)

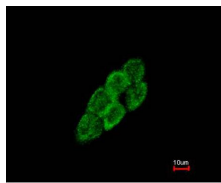
A: HeLa

B: JurKat

5% SDS PAGE

Primary antibody diluted at 1: 1000

Immunofluorescence analysis of methanol-fixed A431, using LTBP4 antibody at 1: 200 dilution.



Costained with Hoechst 33342



Background

Transforming growth factor-beta, or TGFB (see TGFB1; MIM 190180), remains biologically latent after secretion, blocked from activity by its N-terminal propeptide (the latency-associated peptide, or LAP). TGFB is activated by its dissociation from LAP. The latent form of TGFB is secreted in association with a latent TGFB-binding protein, or LTBP (see LTBP1; MIM 150390), and assembled into the extracellular matrix. LTBPs are mainly composed of epidermal growth factor (EGF; MIM 131530)-like repeats and protein domains with 8-cysteine repeats, both of which are also found in fibrillins (e.g., MIM 134797). See Oklu and Hesketh (2000) [PubMed 11104663] for a review of the LTBP gene family.[supplied by OMIM]

Note: This product is for in vitro research use only and is not intended for use in humans or animals.