

## ZFYVE9 Antibody

Catalog No: #45273



Package Size: #45273-1 50ul #45273-2 100ul

Orders: [order@signalwayantibody.com](mailto:order@signalwayantibody.com)Support: [tech@signalwayantibody.com](mailto:tech@signalwayantibody.com)

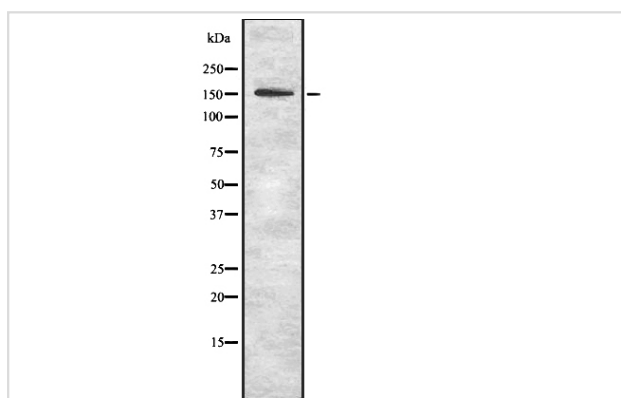
## Description

Product Name	ZFYVE9 Antibody
Host Species	Rabbit
Clonality	Polyclonal
Purification	Rabbit IgG in phosphate buffered saline , pH 7.4, 150mM NaCl, 0.02% sodium azide and 50% glycerol.
Applications	WB
Species Reactivity	Hu Ms
Specificity	ZFYVE9 Antibody detects endogenous levels of total ZFYVE9
Immunogen Type	Peptide
Immunogen Description	A synthesized peptide derived from human ZFYVE9
Target Name	ZFYVE9
Other Names	ZFYVE9, HSARA, Madh-interacting protein, Receptor activation anchor, SMADIP, MADHIP, Novel serine protease, NSP, SARA
Accession No.	Swiss-Prot#: O95405NCBI Gene ID:9372
Calculated MW	156 kDa
Concentration	1.0mg/mL
Formulation	Rabbit IgG in phosphate buffered saline , pH 7.4, 150mM NaCl, 0.02% sodium azide and 50% glycerol.
Storage	Store at -20°C

## Application Details

Western blotting: 1:1000-3000

## Images



Western blot analysis ZFYVE9 using HeLa whole cell lysates

Note: This product is for in vitro research use only and is not intended for use in humans or animals.