

Tensin-2 Antibody

Catalog No: #45401



Package Size: #45401-1 50ul #45401-2 100ul

Orders: order@signalwayantibody.comSupport: tech@signalwayantibody.com

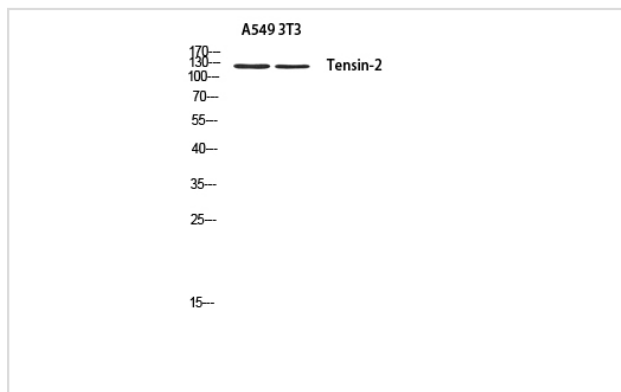
Description

Product Name	Tensin-2 Antibody
Host Species	Rabbit
Clonality	Polyclonal
Purification	Rabbit IgG in phosphate buffered saline , pH 7.4, 150mM NaCl, 0.02% sodium azide and 50% glycerol.
Applications	WB
Species Reactivity	Hu Ms
Specificity	Tensin-2 Antibody detects endogenous levels of total Tensin-2
Immunogen Type	Peptide
Immunogen Description	A synthesized peptide derived from human Tensin-2
Target Name	Tensin-2
Other Names	TENC1
Accession No.	Swiss-Prot#: Q63HR2NCBI Gene ID:23371
Calculated MW	152 kD
Concentration	1.0mg/mL
Formulation	Rabbit IgG in phosphate buffered saline , pH 7.4, 150mM NaCl, 0.02% sodium azide and 50% glycerol.
Storage	Store at -20°C

Application Details

Western blotting: 1:1000-3000

Images



Western blot analysis of A549 3T3 using Tensin-2 antibody. Antibody was diluted at 1:500. Secondary antibody was diluted at 1:20000



Western blot analysis of lysates from HepG2 cells, using Tensin-2 antibody.

Note: This product is for in vitro research use only and is not intended for use in humans or animals.