

Cytochrome c Oxidase 7C Antibody

Catalog No: #45589



Package Size: #45589-1 50ul #45589-2 100ul

Orders: order@signalwayantibody.com

Support: tech@signalwayantibody.com

Description

Product Name	Cytochrome c Oxidase 7C Antibody
Host Species	Rabbit
Clonality	Polyclonal
Purification	Rabbit IgG in phosphate buffered saline , pH 7.4, 150mM NaCl, 0.02% sodium azide and 50% glycerol.
Applications	WB, IHC,ELISA
Species Reactivity	Hu Ms Rt
Immunogen Type	Peptide
Immunogen Description	A synthesized peptide derived from human Cytochrome c Oxidase 7C
Target Name	Cytochrome c Oxidase 7C
Other Names	COX7C
Accession No.	Swiss-Prot#: P15954NCBI Gene ID:1350
Calculated MW	7 kDa
Concentration	1.2
Formulation	pH7.4 PBS, 0.05% NaN3, 40% Glycerol
Storage	Store at -20°C

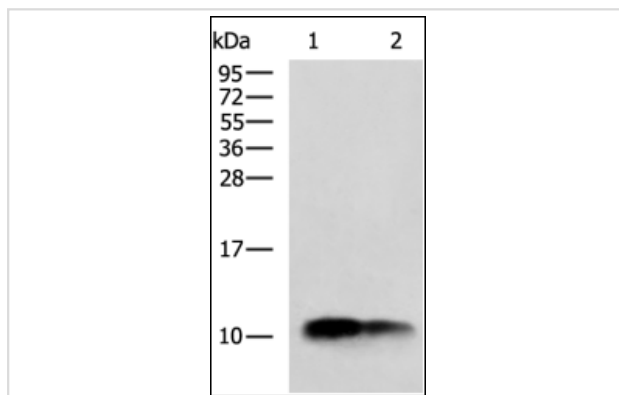
Application Details

WB 1:500-1:2000

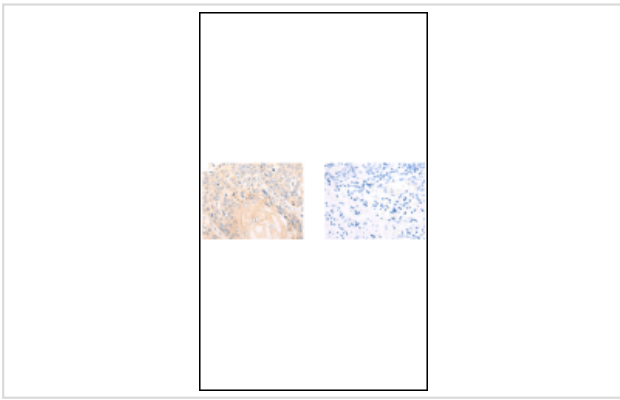
IHC 1:50-1:200

ELISA 1oO 5000-1oO 10000

Images



"Gel: 12%SDS-PAGE
 Lysate: 40 μ g
 Lane 1-2: Mouse heart tissue, Mouse kidney tissue lysates
 Primary antibody: 1/700
 Secondary antibody: at 1/5000 dilution
 Exposure time: 10 seconds
 "



"The image on the left is immunohistochemistry of paraffinembedded Human esophagus cancer tissue using(COX7C Antibody) at dilution 1/50, on the right is treated with synthetic peptide. (Original magnification: $\times 200$)"

Note: This product is for in vitro research use only and is not intended for use in humans or animals.