

## FLRT1 antibody

Catalog No: #23122

Orders: order@signalwayantibody.com

Support: tech@signalwayantibody.com

## Description

Product Name	FLRT1 antibody
Host Species	Rabbit
Clonality	Polyclonal
Purification	Purified by antigen-affinity chromatography.
Applications	WB IHC IF
Species Reactivity	Hu
Immunogen Type	Recombinant protein
Immunogen Description	Recombinant protein fragment contain a sequence corresponding to a region within amino acids 63 and 253 of Human FLRT1
Target Name	FLRT1
Other Names	MGC21624
Accession No.	NCBI Gene ID: 23769NCBI mRNA#: NM_013280NCBI Protein#: NP_037412
Concentration	1mg/ml
Formulation	Supplied in 0.1M Tris-buffered saline with 10% Glycerol (pH7.0). 0.01% Thimerosal was added as a preservative.
Storage	Store at -20°C for long term preservation (recommended). Store at 4°C for short term use.

## Application Details

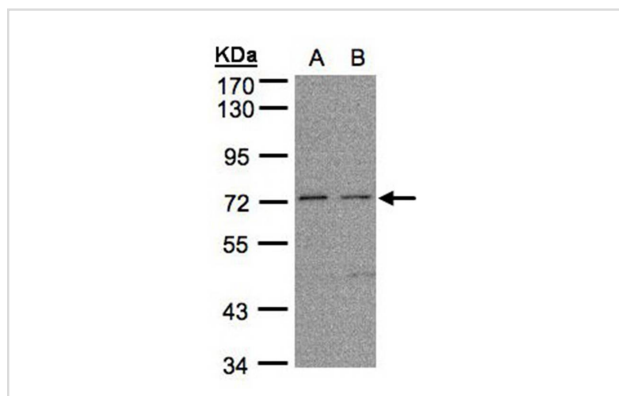
Predicted MW: 74kd

Western blotting: 1:500-1:3000

Immunohistochemistry: 1:100-1:250

Immunofluorescence: 1:100-1:200

## Images



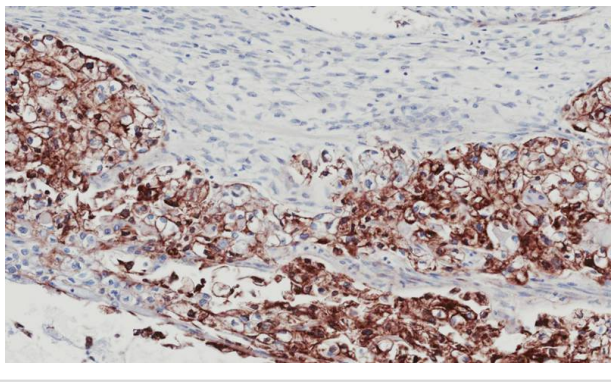
Sample (30ug whole cell lysate)

A: H1299

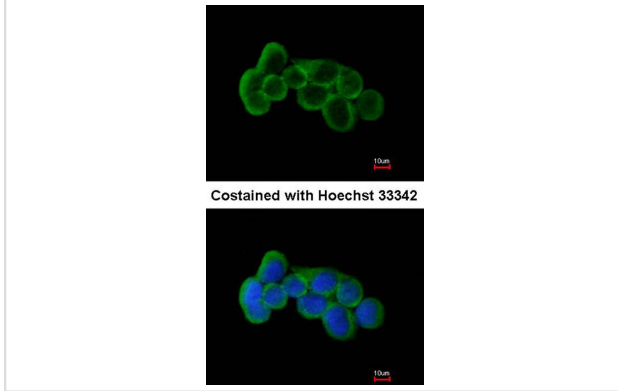
B: HeLa S3

7.5% SDS PAGE

Primary antibody diluted at 1: 1000



Immunohistochemical analysis of paraffin-embedded OVCA, using FLRT1 antibody at 1: 100 dilution.



Immunofluorescence analysis of methanol-fixed A431, using FLRT1 antibody at 1: 200 dilution.

## Background

This gene encodes a member of the fibronectin leucine rich transmembrane protein (FLRT) family. The family members may function in cell adhesion and/or receptor signalling. Their protein structures resemble small leucine-rich proteoglycans found in the extracellular matrix. The encoded protein shares sequence similarity with two other family members, FLRT2 and FLRT3. This gene is expressed in kidney and brain. [provided by RefSeq]

Note: This product is for in vitro research use only and is not intended for use in humans or animals.