

ADAM23 Antibody

Catalog No: #45749



Package Size: #45749-1 50ul #45749-2 100ul

Orders: order@signalwayantibody.comSupport: tech@signalwayantibody.com

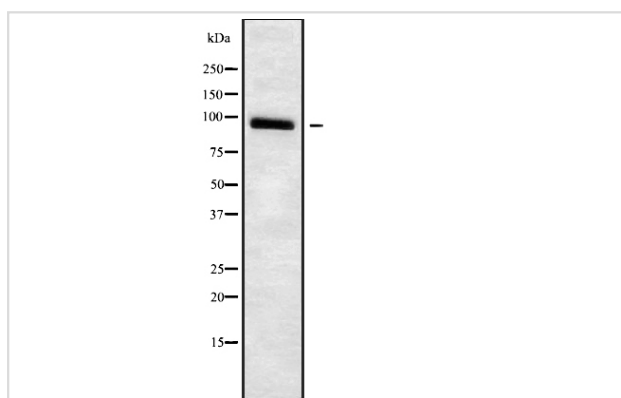
Description

Product Name	ADAM23 Antibody
Host Species	Rabbit
Clonality	Polyclonal
Purification	Rabbit IgG in phosphate buffered saline , pH 7.4, 150mM NaCl, 0.02% sodium azide and 50% glycerol.
Applications	WB
Species Reactivity	Human, Mouse, Rat, Bovine
Specificity	ADAM23 Antibody detects endogenous levels of total ADAM23
Immunogen Type	Peptide
Immunogen Description	KLH-conjugated synthetic peptide encompassing a sequence within the C-term region of human ADAM23. The exact sequence is proprietary.
Target Name	ADAM23
Other Names	ADAM23, ADAM 23, MDC-L, MDC3, MDC-3
Accession No.	Swiss-Prot#: O75077NCBI Gene ID:8745
Calculated MW	92 kDa
Concentration	1.0mg/mL
Formulation	Rabbit IgG in phosphate buffered saline , pH 7.4, 150mM NaCl, 0.02% sodium azide and 50% glycerol.
Storage	Store at -20°C

Application Details

Western blotting: 1:1000-3000

Images



Western blot analysis ADAM23 using Jurkat whole cell lysates

Note: This product is for in vitro research use only and is not intended for use in humans or animals.