

MARCH1 Antibody

Catalog No: #45955



Package Size: #45955-1 50ul #45955-2 100ul

Orders: order@signalwayantibody.comSupport: tech@signalwayantibody.com

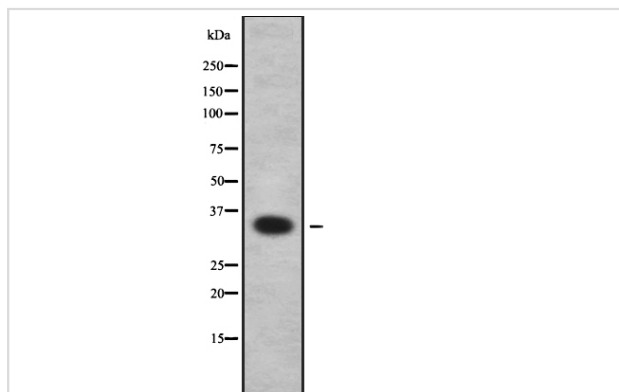
Description

Product Name	MARCH1 Antibody
Host Species	Rabbit
Clonality	Polyclonal
Purification	Rabbit IgG in phosphate buffered saline , pH 7.4, 150mM NaCl, 0.02% sodium azide and 50% glycerol.
Applications	WB
Species Reactivity	Hu
Specificity	MARCH1 Antibody detects endogenous levels of total 42430
Immunogen Type	Peptide
Immunogen Description	A synthesized peptide derived from human MARCH1
Target Name	42430
Other Names	MARCH1, MARCH-I, RING finger protein 171, RNF171
Accession No.	Swiss-Prot#: Q8TCQ1NCBI Gene ID:55016
Calculated MW	32 kDa
Concentration	1.0mg/mL
Formulation	Rabbit IgG in phosphate buffered saline , pH 7.4, 150mM NaCl, 0.02% sodium azide and 50% glycerol.
Storage	Store at -20°C

Application Details

Western blotting: 1:1000-3000

Images



Western blot analysis MARCH1 using LOVO whole cell lysates

Published Papers

el at., MARCH1 silencing suppresses growth of oral squamous cell carcinoma through regulation of PHLPP2. In Clin Transl Oncol on 2022 Jul by L Liu, B Guo,et al..PMID:35122633, , (2022)

[PMID:35122633](https://pubmed.ncbi.nlm.nih.gov/35122633/)

Note: This product is for in vitro research use only and is not intended for use in humans or animals.