

ZNRF1 Antibody

Catalog No: #45964



Package Size: #45964-1 50ul #45964-2 100ul

Orders: order@signalwayantibody.comSupport: tech@signalwayantibody.com

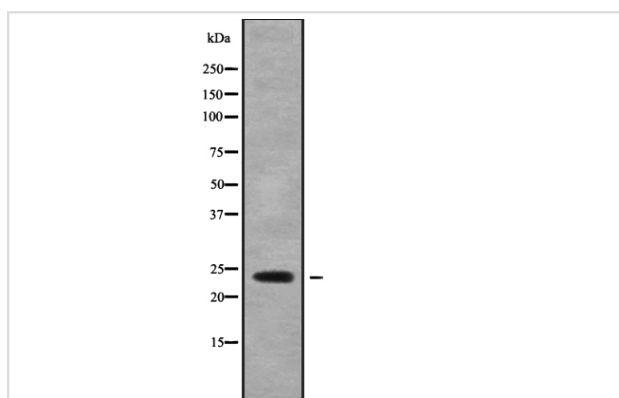
Description

Product Name	ZNRF1 Antibody
Host Species	Rabbit
Clonality	Polyclonal
Purification	Rabbit IgG in phosphate buffered saline , pH 7.4, 150mM NaCl, 0.02% sodium azide and 50% glycerol.
Applications	WB
Species Reactivity	Hu Ms
Specificity	ZNRF1 Antibody detects endogenous levels of total ZNRF1
Immunogen Type	Peptide
Immunogen Description	A synthesized peptide derived from human ZNRF1
Target Name	ZNRF1
Other Names	ZNRF1, NIN283, Zinc/RING finger protein 1, Zinc and ring finger 1, Nerve injury gene 283, Zinc and ring finger protein 1
Accession No.	Swiss-Prot#: Q8ND25NCBI Gene ID:84937
Calculated MW	24 kDa
Concentration	1.0mg/mL
Formulation	Rabbit IgG in phosphate buffered saline , pH 7.4, 150mM NaCl, 0.02% sodium azide and 50% glycerol.
Storage	Store at -20°C

Application Details

Western blotting: 1:1000-3000

Images



Western blot analysis ZNRF1 using HeLa whole cell lysates

Note: This product is for in vitro research use only and is not intended for use in humans or animals.