

## GABRE Antibody

Catalog No: #45986



Package Size: #45986-1 50ul #45986-2 100ul

Orders: [order@signalwayantibody.com](mailto:order@signalwayantibody.com)Support: [tech@signalwayantibody.com](mailto:tech@signalwayantibody.com)

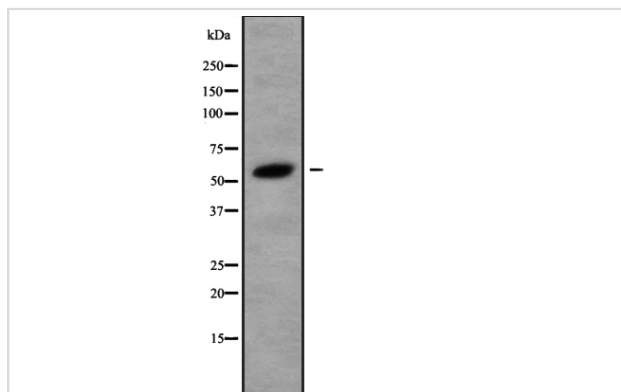
## Description

Product Name	GABRE Antibody
Host Species	Rabbit
Clonality	Polyclonal
Purification	Rabbit IgG in phosphate buffered saline , pH 7.4, 150mM NaCl, 0.02% sodium azide and 50% glycerol.
Applications	WB
Species Reactivity	Hu
Specificity	GABRE Antibody detects endogenous levels of total GABRE
Immunogen Type	Peptide
Immunogen Description	A synthesized peptide derived from human GABRE
Target Name	GABRE
Other Names	GABRE, GABA receptor epsilon, GABA(A) receptor, epsilon
Accession No.	Swiss-Prot#: P78334NCBI Gene ID:2564
Calculated MW	58 kDa
Concentration	1.0mg/mL
Formulation	Rabbit IgG in phosphate buffered saline , pH 7.4, 150mM NaCl, 0.02% sodium azide and 50% glycerol.
Storage	Store at -20°C

## Application Details

Western blotting: 1:1000-3000

## Images



Western blot analysis GABRE using HT29 whole cell lysates

Note: This product is for in vitro research use only and is not intended for use in humans or animals.