

## NDUFC1 Antibody

Catalog No: #46073

Package Size: #46073-1 50ul #46073-2 100ul

Orders: [order@signalwayantibody.com](mailto:order@signalwayantibody.com)Support: [tech@signalwayantibody.com](mailto:tech@signalwayantibody.com)

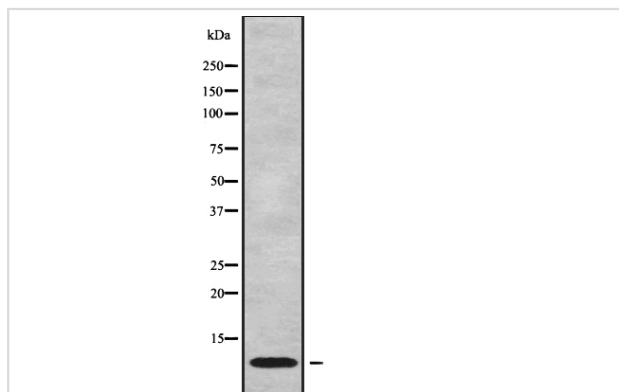
## Description

Product Name	NDUFC1 Antibody
Host Species	Rabbit
Clonality	Polyclonal
Purification	Rabbit IgG in phosphate buffered saline , pH 7.4, 150mM NaCl, 0.02% sodium azide and 50% glycerol.
Applications	WB
Species Reactivity	Hu Ms
Specificity	NDUFC1 Antibody detects endogenous levels of total NDUFC1
Immunogen Type	Peptide
Immunogen Description	A synthesized peptide derived from human NDUFC1
Target Name	NDUFC1
Other Names	NDUFC1, Complex I-KFYI, KFYI, CI-KFYI, Complex I KFYI subunit
Accession No.	Swiss-Prot#: O43677NCBI Gene ID:4717
Calculated MW	9kDa
Concentration	1.0mg/mL
Formulation	Rabbit IgG in phosphate buffered saline , pH 7.4, 150mM NaCl, 0.02% sodium azide and 50% glycerol.
Storage	Store at -20°C

## Application Details

Western blotting: 1:1000-3000

## Images



Western blot analysis NDUFC1 using Jurkat whole cell lysates

Note: This product is for in vitro research use only and is not intended for use in humans or animals.