

## ZC3H15 Polyclonal Antibody

Catalog No: #27271

Package Size: #27271-1 50ul #27271-2 100ul

Orders: order@signalwayantibody.com

Support: tech@signalwayantibody.com

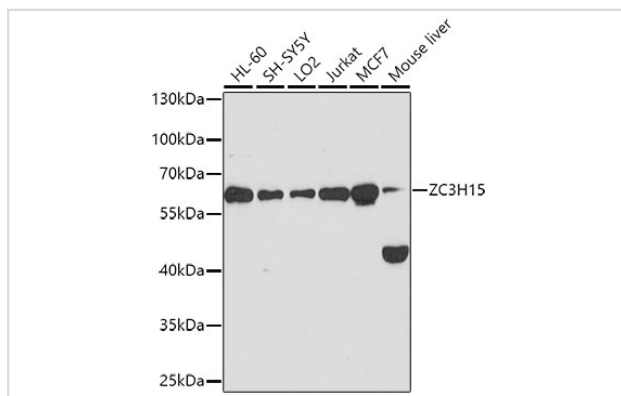
## Description

Product Name	ZC3H15 Polyclonal Antibody
Host Species	Rabbit
Clonality	Polyclonal
Isotype	IgG
Purification	Affinity purification
Applications	WB
Species Reactivity	Hu,Ms
Immunogen Description	Recombinant fusion protein of human ZC3H15 (NP_060941.2).
Other Names	ZC3H15; HT010; LEREPO4; MSTP012; zinc finger CCCH-type containing 15
Accession No.	Swiss-Prot#:Q8WU90NCBI Gene ID:55854
Calculated MW	65kDa
Formulation	Avoid freeze / thaw cycles.   Buffer: PBS with 50% glycerol, pH7.4.
Storage	Store at -20°C

## Application Details

WB □ 1:500 - 1:2000

## Images



Western blot analysis of extracts of various cell lines, using ZC3H15 antibody.

## Background

Note: This product is for in vitro research use only and is not intended for use in humans or animals.