

NACA Polyclonal Antibody

Catalog No: #27296

Package Size: #27296-1 50ul #27296-2 100ul

Orders: order@signalwayantibody.com

Support: tech@signalwayantibody.com

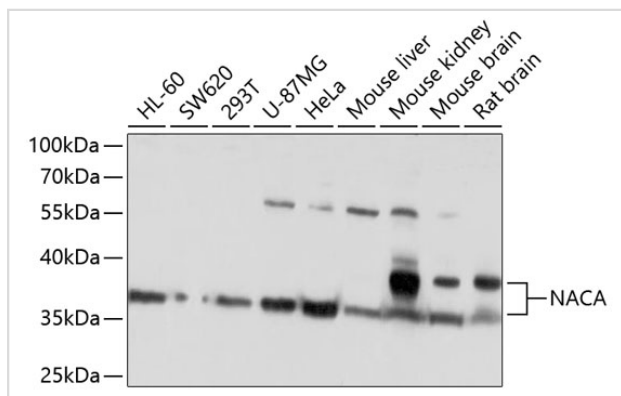
Description

Product Name	NACA Polyclonal Antibody
Host Species	Rabbit
Clonality	Polyclonal
Isotype	IgG
Purification	Affinity purification
Applications	WB,IHC
Species Reactivity	Human,Mouse,Rat
Immunogen Description	Recombinant fusion protein of human NACA (NP_001106673.1).
Other Names	NACA; HSD48; NAC-alpha; NACA1; skNAC; nascent polypeptide-associated complex subunit alpha
Accession No.	Swiss-Prot#:Q13765NCBI Gene ID:4666
Calculated MW	37kDa
Formulation	Avoid freeze / thaw cycles. Buffer: PBS with 50% glycerol, pH7.4.
Storage	Store at -20°C

Application Details

WB □ 1:500 - 1:2000 IHC □ 1:50 - 1:100 IP □ 1:50 - 1:100

Images



Western blot analysis of extracts of various cell lines, using NACA antibody at 1:1000 dilution.

Background

This gene encodes a protein that associates with basic transcription factor 3 (BTF3) to form the nascent polypeptide-associated complex (NAC). This complex binds to nascent proteins that lack a signal peptide motif as they emerge from the ribosome, blocking interaction with the signal recognition particle (SRP) and preventing mistranslocation to the endoplasmic reticulum. This protein is an IgE autoantigen in atopic dermatitis patients.

Alternative splicing results in multiple transcript variants, but the full length nature of some of these variants, including those encoding very large proteins, has not been determined. There are multiple pseudogenes of this gene on different chromosomes.

Note: This product is for in vitro research use only and is not intended for use in humans or animals.