

DIAPH2 Polyclonal Antibody

Catalog No: #27327

Package Size: #27327-1 50ul #27327-2 100ul

Orders: order@signalwayantibody.com

Support: tech@signalwayantibody.com

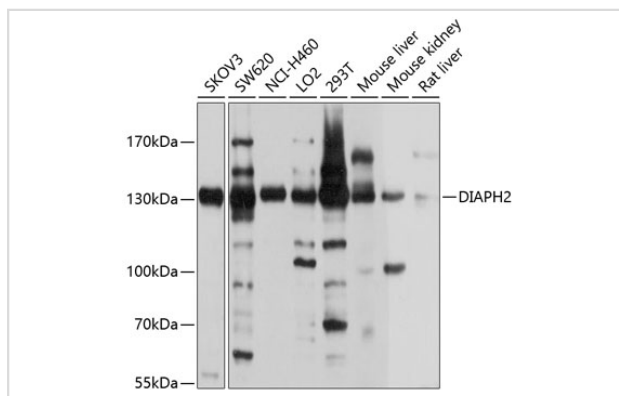
Description

Product Name	DIAPH2 Polyclonal Antibody
Host Species	Rabbit
Clonality	Polyclonal
Isotype	IgG
Purification	Affinity purification
Applications	WB
Species Reactivity	Hu,Ms,Rt
Immunogen Description	Recombinant fusion protein of human DIAPH2 (NP_009293.1).
Other Names	DIAPH2; DIA; DIA2; DRF2; POF; POF2; POF2A; diaphanous related formin 2
Accession No.	Swiss-Prot#:O60879NCBI Gene ID:1730
Calculated MW	125kDa
Formulation	Avoid freeze / thaw cycles. Buffer: PBS with 50% glycerol, pH7.4.
Storage	Store at -20°C

Application Details

WB □ 1:1000 - 1:2000

Images



Western blot analysis of extracts of various cell lines, using DIAPH2 antibody.

Background

The product of this gene belongs to the diaphanous subfamily of the formin homology family of proteins. This gene may play a role in the development and normal function of the ovaries. Defects in this gene have been linked to premature ovarian failure 2. Alternatively spliced transcript variants encoding different isoforms have been identified.

Note: This product is for in vitro research use only and is not intended for use in humans or animals.