

# EPHA8 Polyclonal Antibody

Catalog No: #27329



Package Size: #27329-1 50ul #27329-2 100ul

Orders: [order@signalwayantibody.com](mailto:order@signalwayantibody.com)  
Support: [tech@signalwayantibody.com](mailto:tech@signalwayantibody.com)

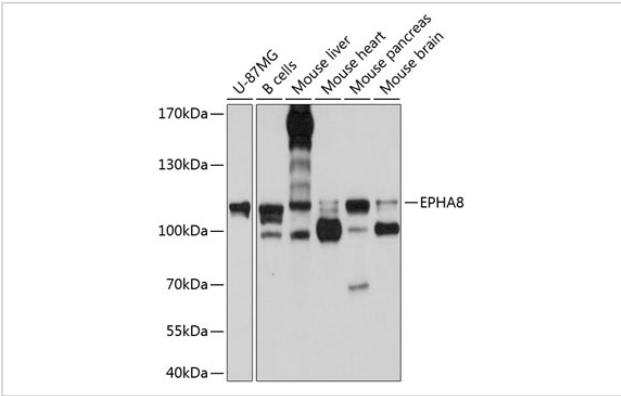
## Description

Product Name	EPHA8 Polyclonal Antibody
Host Species	Rabbit
Clonality	Polyclonal
Isotype	IgG
Purification	Affinity purification
Applications	WB
Species Reactivity	Hu,Ms
Immunogen Description	Recombinant fusion protein of human EPHA8 (NP_001006944.1).
Other Names	EPHA8; EEK; EK3; HEK3; EPH receptor A8
Accession No.	Swiss-Prot#:P29322NCBI Gene ID:2046
Calculated MW	111kDa
Formulation	Avoid freeze / thaw cycles. Buffer: PBS with 50% glycerol, pH7.4.
Storage	Store at -20°C

## Application Details

WB 1:1000 - 1:2000

## Images



Western blot analysis of extracts of various cell lines, using EPHA8 antibody.

## Background

This gene encodes a member of the ephrin receptor subfamily of the protein-tyrosine kinase family. EPH and EPH-related receptors have been implicated in mediating developmental events, particularly in the nervous system. Receptors in the EPH subfamily typically have a single kinase domain and an extracellular region containing a Cys-rich domain and 2 fibronectin type III repeats. The ephrin receptors are divided into 2 groups based on the similarity of their extracellular domain sequences and their affinities for binding ephrin-A and ephrin-B ligands. The protein encoded by this gene functions as a receptor for ephrin A2, A3 and A5 and plays a role in short-range contact-mediated axonal guidance during development of the mammalian nervous system.

---

Note: This product is for in vitro research use only and is not intended for use in humans or animals.