

MS4A8B Polyclonal Antibody

Catalog No: #27379

Package Size: #27379-1 50ul #27379-2 100ul

Orders: order@signalwayantibody.com

Support: tech@signalwayantibody.com

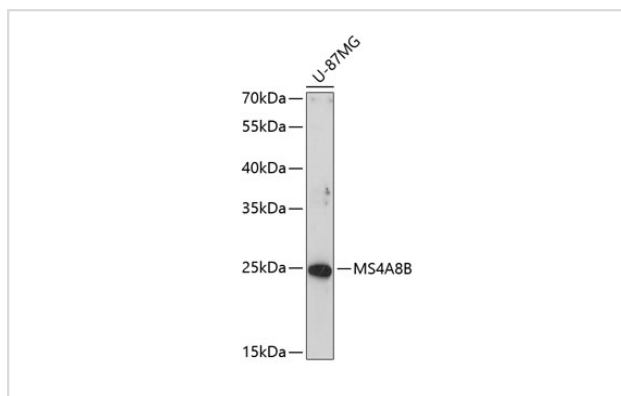
Description

Product Name	MS4A8B Polyclonal Antibody
Host Species	Rabbit
Clonality	Polyclonal
Isotype	IgG
Purification	Affinity purification
Applications	WB
Species Reactivity	Human,Mouse
Immunogen Description	A synthetic peptide of human MS4A8B
Other Names	MS4A8;4SPAN4;CD20L5;MS4A4;MS4A8B
Accession No.	Uniprot:Q9BY19GeneID:83661
Calculated MW	26kDa
SDS-PAGE MW	26kDa
Formulation	PBS with 0.02% sodium azide,50% glycerol,pH7.3.
Storage	Store at -20°C. Avoid freeze / thaw cycles.

Application Details

WB □ 1:500 - 1:2000

Images



Western blot analysis of extracts of U-87MG cells, using MS4A8B antibody.

Background

This gene encodes a member of the membrane-spanning 4A gene family. Members of this protein family are characterized by common structural features and similar intron/exon splice boundaries and display unique expression patterns among hematopoietic cells and nonlymphoid tissues. The gene encoding this protein is localized to 11q12.3, among a cluster of family members.

Note: This product is for in vitro research use only and is not intended for use in humans or animals.