

DAB1 Polyclonal Antibody

Catalog No: #27390



Package Size: #27390-1 50ul #27390-2 100ul

Orders: order@signalwayantibody.com

Support: tech@signalwayantibody.com

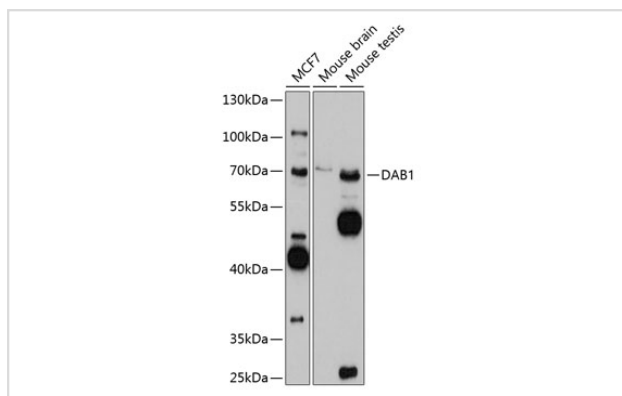
Description

Product Name	DAB1 Polyclonal Antibody
Host Species	Rabbit
Clonality	Polyclonal
Isotype	IgG
Purification	Affinity purification
Applications	WB,IF
Species Reactivity	Human,Mouse
Immunogen Description	Recombinant fusion protein of human DAB1 (NP_066566.3).
Other Names	DAB1;SCA37
Accession No.	Uniprot:O75553GeneID:1600
Calculated MW	63kDa
SDS-PAGE MW	63kDa
Formulation	PBS with 0.02% sodium azide,50% glycerol,pH7.3.
Storage	Store at -20°C. Avoid freeze / thaw cycles.

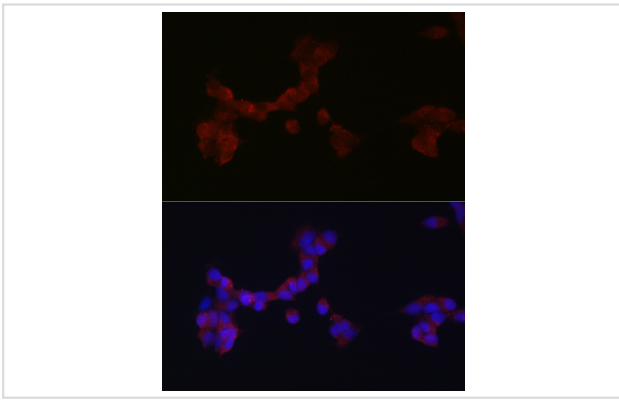
Application Details

WB 1:500 - 1:2000 IF 1:50 - 1:200

Images



Western blot analysis of extracts of various cell lines, using DAB1 antibody.



Immunofluorescence analysis of SH-SY5Y cells using DAB1 Rabbit pAb.

Background

The laminar organization of multiple neuronal types in the cerebral cortex is required for normal cognitive function. In mice, the disabled-1 gene plays a central role in brain development, directing the migration of cortical neurons past previously formed neurons to reach their proper layer. This gene is similar to disabled-1, and the protein encoded by this gene is thought to be a signal transducer that interacts with protein kinase pathways to regulate neuronal positioning in the developing brain.

Note: This product is for in vitro research use only and is not intended for use in humans or animals.