

THUMPD3 Polyclonal Antibody

Catalog No: #27423

Package Size: #27423-1 50ul #27423-2 100ul

Orders: order@signalwayantibody.comSupport: tech@signalwayantibody.com

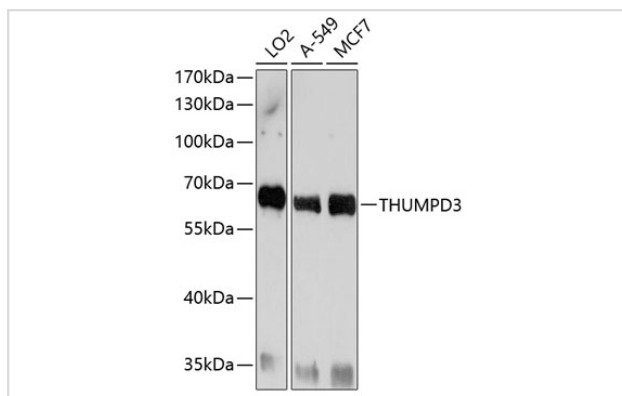
Description

Product Name	THUMPD3 Polyclonal Antibody
Host Species	Rabbit
Clonality	Polyclonal
Isotype	IgG
Purification	Affinity purification
Applications	WB,IHC
Species Reactivity	Human,Mouse,Rat
Immunogen Description	Recombinant fusion protein of human THUMPD3 (NP_056268.2).
Other Names	THUMPD3
Accession No.	Uniprot:Q9BV44GeneID:25917
Calculated MW	57kDa
SDS-PAGE MW	57kDa
Formulation	PBS with 0.02% sodium azide,50% glycerol,pH7.3.
Storage	Store at -20°C. Avoid freeze / thaw cycles.

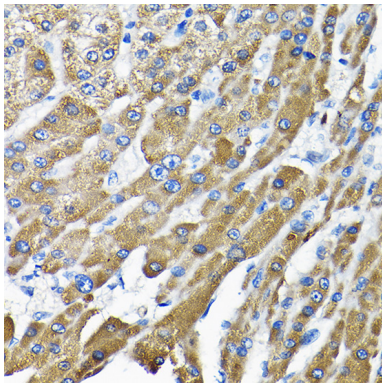
Application Details

WB □ 1:500 - 1:2000 IHC □ 1:50 - 1:200

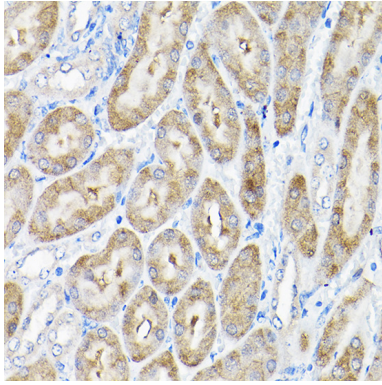
Images



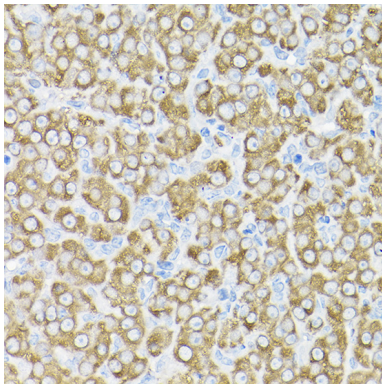
Western blot analysis of extracts of various cell lines, using THUMPD3 antibody.



Immunohistochemistry of paraffin-embedded human liver cancer using THUMP3 Rabbit pAb.



Immunohistochemistry of paraffin-embedded mouse kidney using THUMP3 Rabbit pAb.



Immunohistochemistry of paraffin-embedded rat ovary using THUMP3 Rabbit pAb.

Note: This product is for in vitro research use only and is not intended for use in humans or animals.