

LDB2 Polyclonal Antibody

Catalog No: #27450

Package Size: #27450-1 50ul #27450-2 100ul

Orders: order@signalwayantibody.com

Support: tech@signalwayantibody.com

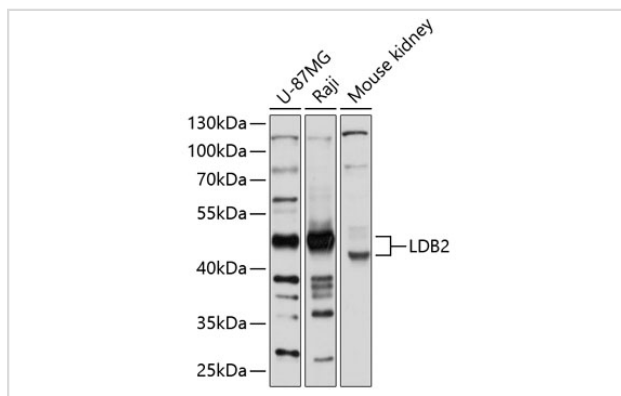
Description

Product Name	LDB2 Polyclonal Antibody
Host Species	Rabbit
Clonality	Polyclonal
Isotype	IgG
Purification	Affinity purification
Applications	WB,IHC
Species Reactivity	Hu,Ms,Rt
Immunogen Description	Recombinant fusion protein of human LDB2 (NP_001281.1).
Other Names	LDB2; CLIM1; LDB-2; LDB1; LIM domain binding 2
Accession No.	Swiss-Prot#:O43679NCBI Gene ID:9079
Calculated MW	43kDa
Formulation	Avoid freeze / thaw cycles. Buffer: PBS with 50% glycerol, pH7.4.
Storage	Store at -20°C

Application Details

WB □ 1:500 - 1:2000 IHC □ 1:50 - 1:200

Images



Western blot analysis of extracts of various cell lines, using LDB2 antibody.

Background

The protein encoded by this gene belongs to the LIM-domain binding family. Members of this family are characterized by a conserved nuclear localization sequence, an amino-terminal homodimerization domain and a carboxy-terminal LIM interaction domain. These proteins function as adapter molecules to allow assembly of transcriptional regulatory complexes. Genetic association studies suggest functions for this gene in rhegmatogenous retinal detachment and coronary artery disease. Alternative splicing results in multiple transcript variants.

Note: This product is for in vitro research use only and is not intended for use in humans or animals.