

# NOMO1 Polyclonal Antibody

Catalog No: #27465



Package Size: #27465-1 50ul #27465-2 100ul

Orders: [order@signalwayantibody.com](mailto:order@signalwayantibody.com)

Support: [tech@signalwayantibody.com](mailto:tech@signalwayantibody.com)

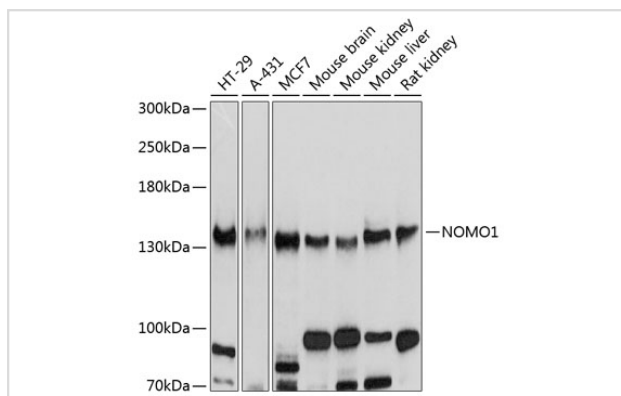
## Description

Product Name	NOMO1 Polyclonal Antibody
Host Species	Rabbit
Clonality	Polyclonal
Isotype	IgG
Purification	Affinity purification
Applications	WB,IHC
Species Reactivity	Human,Mouse,Rat
Immunogen Description	Recombinant fusion protein of human NOMO1 (NP_055102.3).
Other Names	NOMO1;Nomo;PM5
Accession No.	Uniprot:Q15155GeneID:23420
Calculated MW	134kDa
SDS-PAGE MW	134kDa
Formulation	PBS with 0.02% sodium azide,50% glycerol,pH7.3.
Storage	Store at -20°C. Avoid freeze / thaw cycles.

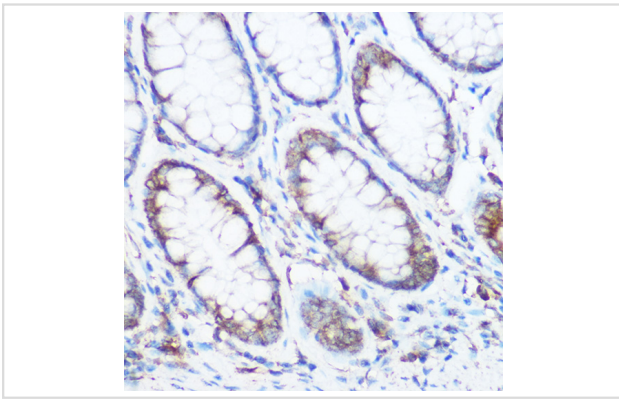
## Application Details

WB □ 1:1000 - 1:2000 IHC □ 1:50 - 1:200

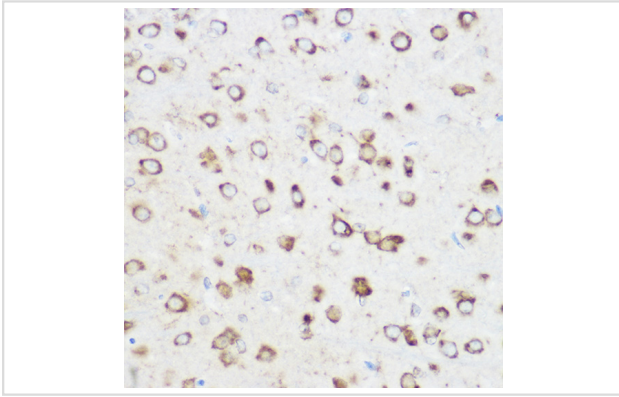
## Images



Western blot analysis of extracts of various cell lines, using NOMO1 antibody.



Immunohistochemistry of paraffin-embedded human colon carcinoma using NOMO1 Rabbit pAb.



Immunohistochemistry of paraffin-embedded rat brain using NOMO1 Rabbit pAb.

## Background

This gene encodes a protein originally thought to be related to the collagenase gene family. This gene is one of three highly similar genes in a region of duplication located on the p arm of chromosome 16. These three genes encode closely related proteins that may have the same function. The protein encoded by one of these genes has been identified as part of a protein complex that participates in the Nodal signaling pathway during vertebrate development. Mutations in ABCC6, which is located nearby, rather than mutations in this gene are associated with pseudoxanthoma elasticum (PXE).

Note: This product is for in vitro research use only and is not intended for use in humans or animals.