

## MICU2 Polyclonal Antibody

Catalog No: #27642

Package Size: #27642-1 50ul #27642-2 100ul

Orders: order@signalwayantibody.com

Support: tech@signalwayantibody.com

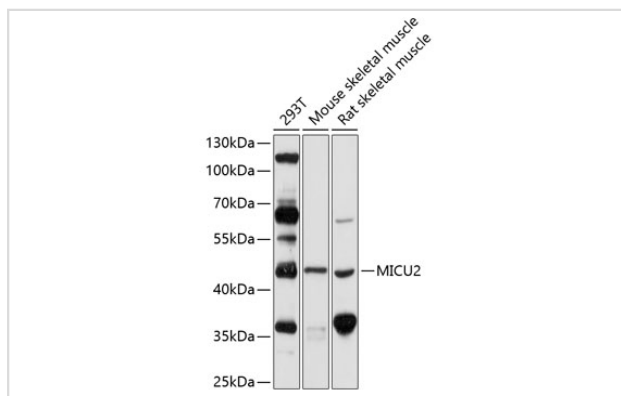
## Description

Product Name	MICU2 Polyclonal Antibody
Host Species	Rabbit
Clonality	Polyclonal
Isotype	IgG
Purification	Affinity purification
Applications	WB
Species Reactivity	Hu
Immunogen Description	Recombinant fusion protein of human MICU2 (NP_689939.1).
Other Names	MICU2; 1110008L20Rik; EFHA1; mitochondrial calcium uptake 2
Accession No.	Swiss-Prot#:Q81YU8NCBI Gene ID:221154
Calculated MW	50kDa
Formulation	Avoid freeze / thaw cycles.   Buffer: PBS with 50% glycerol, pH7.4.
Storage	Store at -20°C

## Application Details

WB □ 1:500 - 1:2000

## Images



Western blot analysis of extracts of various cell lines, using MICU2 antibody.

## Published Papers

el at., Quantitative proteomic analysis of scleras in guinea pig exposed to wavelength defocus. In J Proteomics on 2021 Jul 15 by Yingying Wen, Le Jin, et al..PMID:33964483, , (2021)

[PMID:33964483](https://pubmed.ncbi.nlm.nih.gov/33964483/)

---

Note: This product is for in vitro research use only and is not intended for use in humans or animals.