

# METTL13 Polyclonal Antibody

Catalog No: #27722



Package Size: #27722-1 50ul #27722-2 100ul

Orders: [order@signalwayantibody.com](mailto:order@signalwayantibody.com)  
Support: [tech@signalwayantibody.com](mailto:tech@signalwayantibody.com)

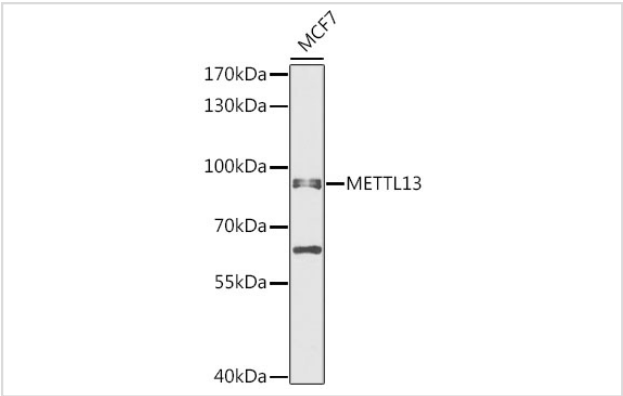
## Description

Product Name	METTL13 Polyclonal Antibody
Host Species	Rabbit
Clonality	Polyclonal
Isotype	IgG
Purification	Affinity purification
Applications	WB,IF
Species Reactivity	Human
Immunogen Description	Recombinant fusion protein of human METTL13 (NP_057019.3).
Other Names	METTL13;5630401D24Rik;CGI-01;KIAA0859;feat
Accession No.	Uniprot:Q8N6R0GeneID:51603
Calculated MW	85kDa
SDS-PAGE MW	85kDa
Formulation	PBS with 0.02% sodium azide,50% glycerol,pH7.3.
Storage	Store at -20°C. Avoid freeze / thaw cycles.

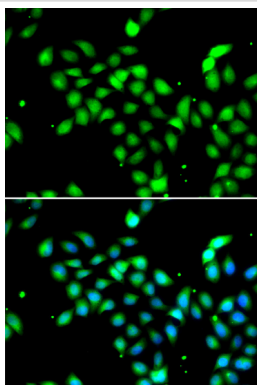
## Application Details

WB 1:500 - 1:2000IF 1:50 - 1:100

## Images



Western blot analysis of extracts of MCF7 cells, using METTL13 antibody.



Immunofluorescence analysis of A549 cells using METTL13 antibody.

## Background

Dual methyltransferase that catalyzes methylation of elongation factor 1-alpha (EEF1A1 and EEF1A2 at two different positions, and is therefore involved in the regulation of mRNA translation. Via its C-terminus, methylates EEF1A1 and EEF1A2 at the N-terminal residue 'Gly-2'. Via its N-terminus dimethylates EEF1A1 and EEF1A2 at residue 'Lys-55'. Has no activity towards core histones H2A, H2B, H3 and H4. Negatively regulates cell proliferation at G1/S transition via transcriptional suppression of cell cycle regulatory genes such as CDK4 and CDK6.

Note: This product is for in vitro research use only and is not intended for use in humans or animals.