

CXCL2 Polyclonal Antibody

Catalog No: #27740

Package Size: #27740-1 50ul #27740-2 100ul

Orders: order@signalwayantibody.com

Support: tech@signalwayantibody.com

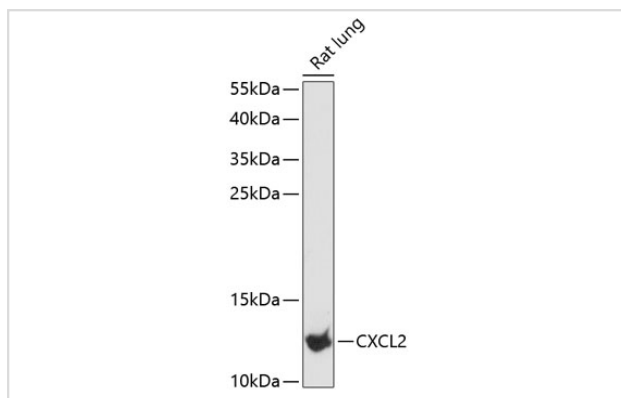
Description

Product Name	CXCL2 Polyclonal Antibody
Host Species	Rabbit
Clonality	Polyclonal
Isotype	IgG
Purification	Affinity purification
Applications	WB
Species Reactivity	Rat
Immunogen Description	Recombinant fusion protein of human CXCL2 (NP_002080.1).
Other Names	CXCL2;CINC-2a;GRO2;GROb;MGSA-b;MIP-2a;MIP2;MIP2A;SCYB2
Accession No.	Uniprot:P19875GeneID:2920
Calculated MW	11kDa
SDS-PAGE MW	11kDa
Formulation	PBS with 0.02% sodium azide,50% glycerol,pH7.3.
Storage	Store at -20°C. Avoid freeze / thaw cycles.

Application Details

WB □ 1:500 - 1:2000

Images



Western blot analysis of extracts of rat lung, using CXCL2 antibody.

Background

This antimicrobial gene is part of a chemokine superfamily that encodes secreted proteins involved in immunoregulatory and inflammatory processes. The superfamily is divided into four subfamilies based on the arrangement of the N-terminal cysteine residues of the mature peptide. This chemokine, a member of the CXC subfamily, is expressed at sites of inflammation and may suppress hematopoietic progenitor cell proliferation.

Published Papers

el et al., A pyroptosis-related gene signature that predicts immune infiltration and prognosis in colon cancerInFront OncolOn2023 Jul 12byMingjian

Wu?1,?Shuai Hao et al..PMID:37503314, , (2023)

PMID:37503314

Note: This product is for in vitro research use only and is not intended for use in humans or animals.