

## NAT2 Polyclonal Antibody

Catalog No: #27778



Package Size: #27778-1 50ul #27778-2 100ul

Orders: [order@signalwayantibody.com](mailto:order@signalwayantibody.com)Support: [tech@signalwayantibody.com](mailto:tech@signalwayantibody.com)

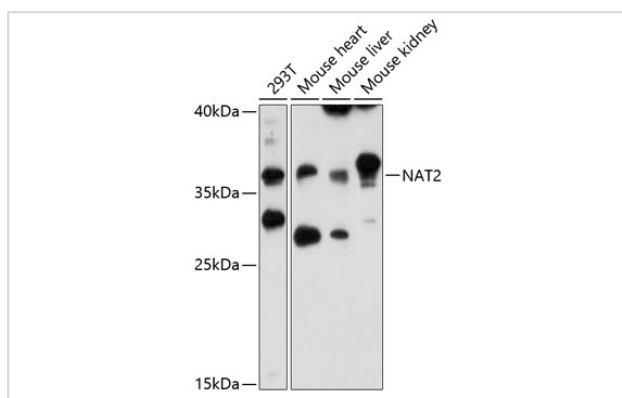
## Description

Product Name	NAT2 Polyclonal Antibody
Host Species	Rabbit
Clonality	Polyclonal
Isotype	IgG
Purification	Affinity purification
Applications	WB,IHC
Species Reactivity	Human,Mouse,Rat
Immunogen Description	Recombinant fusion protein of human NAT2 (NP_000006.2).
Other Names	NAT2;AAC2;NAT-2;PNAT
Accession No.	Uniprot:P11245GeneID:10
Calculated MW	36kDa
SDS-PAGE MW	36kDa
Formulation	PBS with 0.02% sodium azide,50% glycerol,pH7.3.
Storage	Store at -20°C. Avoid freeze / thaw cycles.

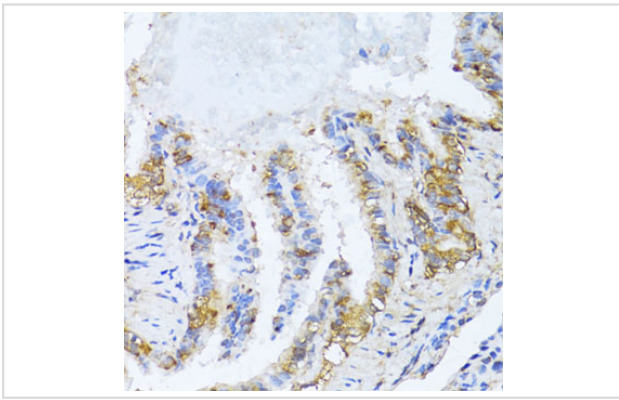
## Application Details

WB □ 1:500 - 1:2000 IHC □ 1:50 - 1:200

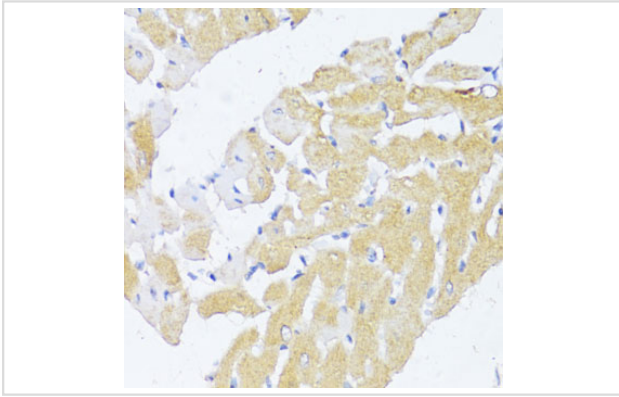
## Images



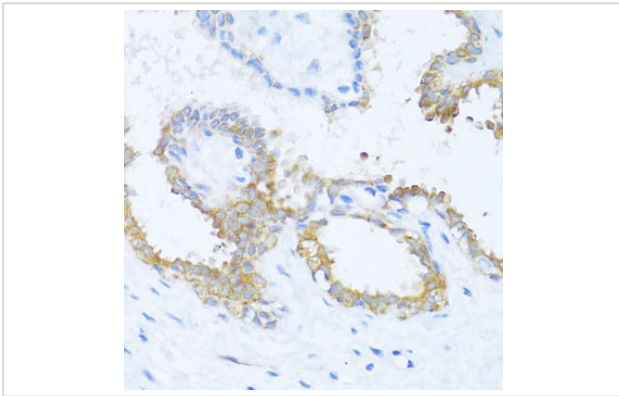
Western blot analysis of extracts of various cell lines, using NAT2 antibody.



Immunohistochemistry of paraffin-embedded rat lung using NAT2 antibody.



Immunohistochemistry of paraffin-embedded rat heart using NAT2 antibody.



Immunohistochemistry of paraffin-embedded human breast using NAT2 antibody.

## Background

This gene encodes an enzyme that functions to both activate and deactivate arylamine and hydrazine drugs and carcinogens. Polymorphisms in this gene are responsible for the N-acetylation polymorphism in which human populations segregate into rapid, intermediate, and slow acetylator phenotypes. Polymorphisms in this gene are also associated with higher incidences of cancer and drug toxicity. A second arylamine N-acetyltransferase gene (NAT1) is located near this gene (NAT2).

Note: This product is for in vitro research use only and is not intended for use in humans or animals.